



# Measure Z Annual Report

## Fiscal Year 2021 – 2022



# **City of Wildomar**

## **FY 2021-22**

Ben J. Benoit, Mayor  
Joseph Morabito, Mayor Pro Tem  
Ashlee DePhillippo, Council Member  
Bridgette Moore, Council Member  
Dustin Nigg, Council Member

Daniel York  
City Manager

Thomas D. Jex  
City Attorney

## **Measure Z Oversight and Advisory Committee**

James Howey, Committee Member  
Nolan King, Committee Member  
Kathleen Kovich, Committee Member  
Timothy Underdown, Committee Member  
Shelia Urlaub, Committee Member

## **Community Services and Parks Operations Staff**

Daniel Torres, Community Services Director  
Annelle Rosales, Administrative Assistant I  
Christy Bowen, Maintenance Worker II  
Travis Solorio, Maintenance Worker II  
Nehemiah Davis, Maintenance Worker I  
Janet Morales, City Clerk

# TABLE OF CONTENTS

Introduction.....	01
Wildomar Parks Description.....	03
Maintenance and Operations Report .....	05
Measure Z Funded Parks Special Events .....	14
Measure Z Oversight and Advisory Committee Comments Summary.....	15
Measure Z Oversight and Advisory Committee Comments .....	16
Financial Information.....	104





# INTRODUCTION

The purpose of this report is to provide the City Council of the City of Wildomar with the amount of funds collected and expended, the status of the community parks and community park facilities, programs and services funded by the tax proceeds raised by Measure Z, including the costs of staff, utilities, materials, contract services and other items related to the repair and maintenance of community parks and community park facilities.

Specifically as stated in Ordinance 71 and Municipal Code section 3.18:

## **3.18.020 Purpose.**

*The tax authorized by this chapter is solely for the purpose of raising revenue to pay for the availability of and the funding, repair, operating and maintenance of community parks and community park related facilities, programs and services within the City of Wildomar. The tax is not imposed as an ad valorem tax on real property, nor a transaction tax or sales tax on the sale of real property. The proceeds of the tax will be deposited in a special fund and shall be restricted for the purposes stated above. As such, the tax is a special tax. (Ord. 71 § 1, 2012)*<sup>1</sup>

## **3.18.030 Use of proceeds.**

*Tax proceeds raised pursuant to this chapter may only be used for Wildomar community park purposes as specified in Section 3.18.020, including, but not limited to, maintaining clean public restrooms, maintaining safe playground equipment, restoring safety lighting, removing graffiti, maintaining sports fields, and maintaining landscaping and public structures situated in Wildomar community parks. Tax proceeds raised pursuant to this chapter may also be used for audit reports as set forth in this chapter. (Ord. 71 § 1, 2012)*

## **3.18.040 Annual report.**

*An annual report shall be prepared and filed with the City Council of the City as provided in Sections 50075.1 and 50075.3 of the California [Government Code](#), and shall contain: (A) the amount of funds collected and expended; and (B) the status of the community park and community park facilities, programs and services funded by the tax proceeds raised pursuant to this chapter, including the costs of staff, utilities, materials, contract services and other items related to the repair and maintenance of community parks and community park facilities. (Ord. 71 § 1, 2012)*

**3.18.050 Annual audit.** *The Director of Finance shall cause the City's independent auditor to perform an annual audit of the expenditure of the proceeds of the tax imposed by this chapter. (Ord. 71 § 1, 2012)*

On November 6, 2012, Wildomar residents voted and approved a \$28 annual parcel tax (Measure Z) to assist in the funding of park operations and related park activities. By Statute, the passage of Measure Z triggered a number of tasks, one of which was establishing the Parks Funding Measure Z Citizen's Oversight Advisory Committee. At the completion of the Fiscal Year 2021-22, the committee members were:

James Howey, Committee Member  
Nolan King, Committee Member  
Kathleen Kovich, Committee Member  
Timothy Underdown, Committee Member  
Shelia Urlaub, Committee Member

Committee Meetings for FY 2021-22, were held:

- September 02, 2021
- December 02, 2021
- February 24, 2022
- May 26, 2022

This report includes a description of each of the four City of Wildomar parks, a report stating the Maintenance and Operations performed during the year, a recap of the Measure Z Funded Special Event, an inspection of the parks conditions and operations by each of the committee members and the Wildomar Measure Z Park Fund Financial Statements for the Year Ended June 30, 2022 as provided by the independent audit firm of Roger Anderson, Malody & Scott.

# DESCRIPTION OF WILDOMAR PARKS

## **MARNA O'BRIEN PARK**

20505 Palomar Street

The largest of the city parks with a total of 9 acres and is often the site of many of the City's special events. The park facilities consist of three baseball fields with spectator and player benches, two full basketball court, and two large multi-use soccer fields along with sports field lighting, a tot-lot for ages 2-5 yrs., a Little Free Library, three picnic shelters, a concrete walking trail, parking lot and permanent restrooms and a concession stand which is used for special events.

## **REGENCY HERITAGE PARK**

20171 Autumn Oaks Place

This neighborhood park for the residents of Wildomar includes a tot-lot play area for ages 5-12 yrs., two basketball half courts, picnic shelters, park benches and a dog park. The park is designed with a direct access so that its facilities can be shared with neighborhood school.

## **WINDSONG PARK**

35459 Prairie Road

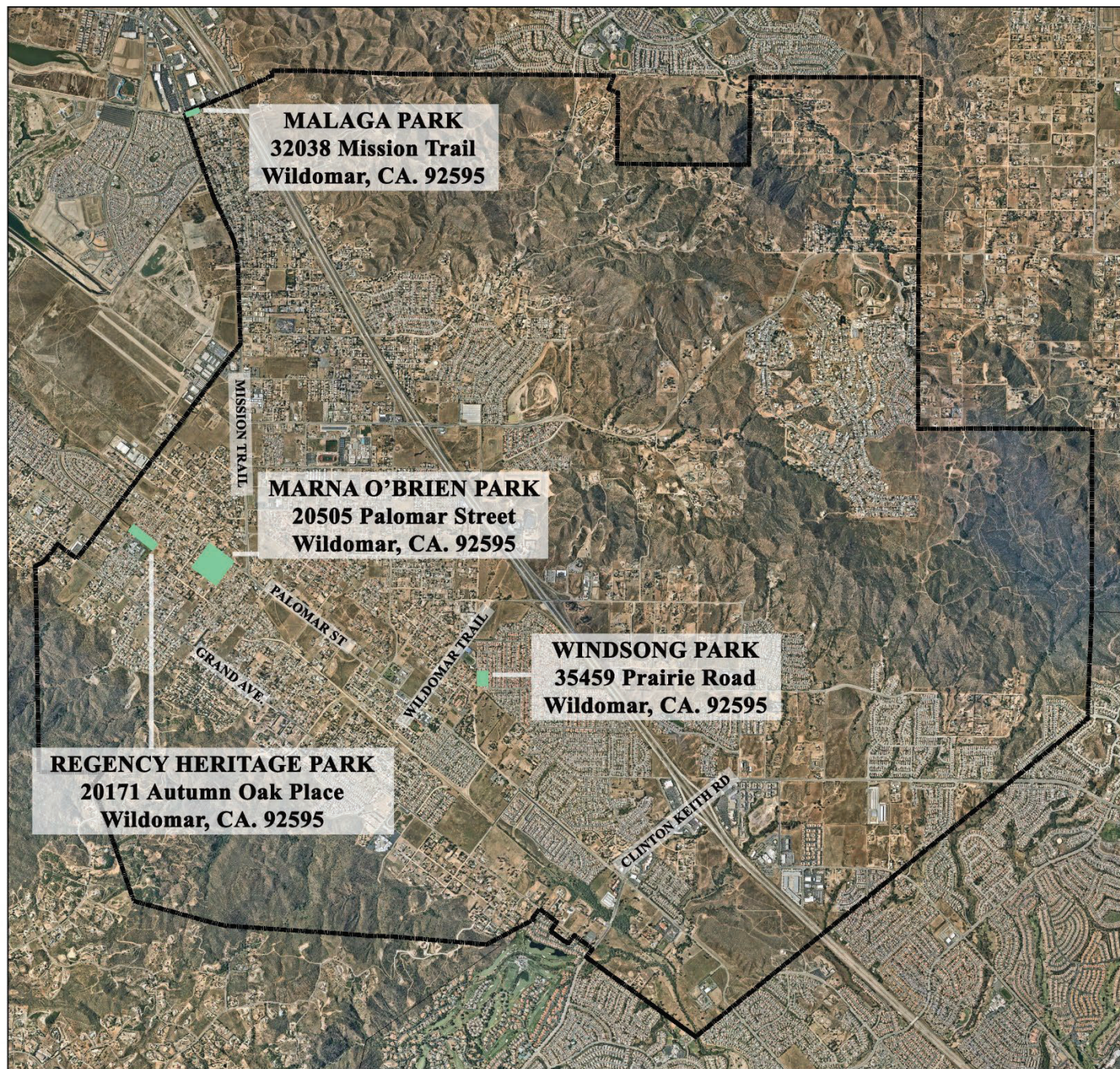
This neighborhood park is in the Windsong area of Wildomar. The park includes tot-lot for ages 2-5 yrs., basketball court, a Little Free Library, concrete walkway around the perimeter of the park, picnic tables and picnic shelters.

## **MALAGA PARK**

32038 Mission Trail

The newest of the city parks and it serves as a gateway to the City of Wildomar when traveling from the City of Lake Elsinore. The park amenities include a perimeter walkway, wooden shade arbors, a decorative rock feature near the Welcome to Wildomar/Malaga Park Monument, a Little Free Library, and has a beautiful view of the Cleveland National Forest Mountains.





**MALAGA PARK**  
32038 Mission Trail  
Wildomar, CA. 92595

**MARNA O'BRIEN PARK**  
20505 Palomar Street  
Wildomar, CA. 92595

**WINDSONG PARK**  
35459 Prairie Road  
Wildomar, CA. 92595

**REGENCY HERITAGE PARK**  
20171 Autumn Oak Place  
Wildomar, CA. 92595

0 0.25 0.5 1 Miles





# MAINTENANCE AND OPERATIONS SUMMARY

The daily upkeep of the four city parks is performed by contracted landscape, janitorial, and security services. These services are vital to the overall appearance and maintenance of each park locations assets. City Staff performs a daily walk thru to confirm that the parks are at an adequate service level for use.

During FY21-22 the following contractors provided routine services:

- Inland Empire Landscape
- Commercial Building Management
- MPS Security

Throughout the year larger maintenance items and projects are conducted to provide the most utility from each park location. The following pages highlight these items as well as reporting the water usage for each park.

During FY21-22 the below contractor provided additional services:

- Always Reliable Backflow
- Asap Services
- Biondi Painting
- Corona Clay
- Daniel Pest Control
- DeAnza Termite
- Fence Masters
- J.J.'s Plumbing
- Lawnscape Systems
- Murrieta Lock and Safe
- NPPW Services
- Pest Options
- Sunbelt Rentals
- Turboscape



## MARNA O'BRIEN



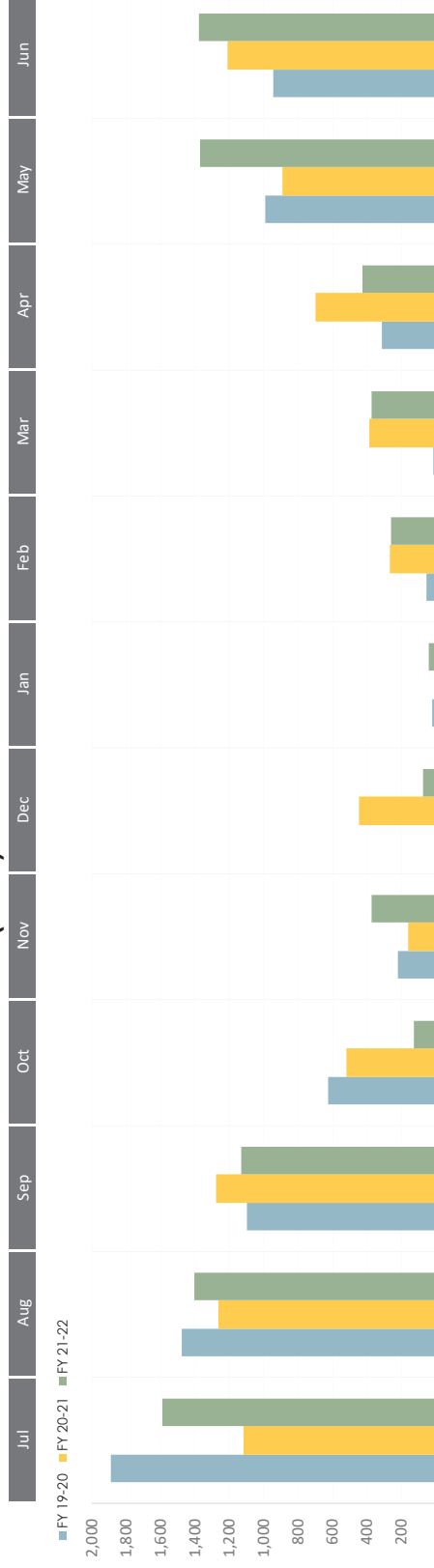
The regular landscape services that were performed at Marna O'Brien during this period includes weekly mowing during the warm season, leaf and debris removal during the fall season quarterly turf fertilization, shrub trimming, irrigation oversight, and upkeep of the parking lot and curbing.

The janitorial contractor provided twice a day services to this location that include, but not limited to cleaning restroom facility, removal and replacing of trash can liners, remove any debris within park, and clearing of walkways.

The playground received 120 cubic yards of certified surface wood fibers from Turboscape; they used the blower device attached to their trucks to evenly distribute the material within the area. Maintenance to the baseball fields were completed in coordination with the delivery of infield mix provided by Corona Clay and distributed by Asap Services.

# WATER USAGE

## CENTUM CUBIC FEET (CCF) USED - MARNA O'BRIEN PARK



\*Rates during FY21-22

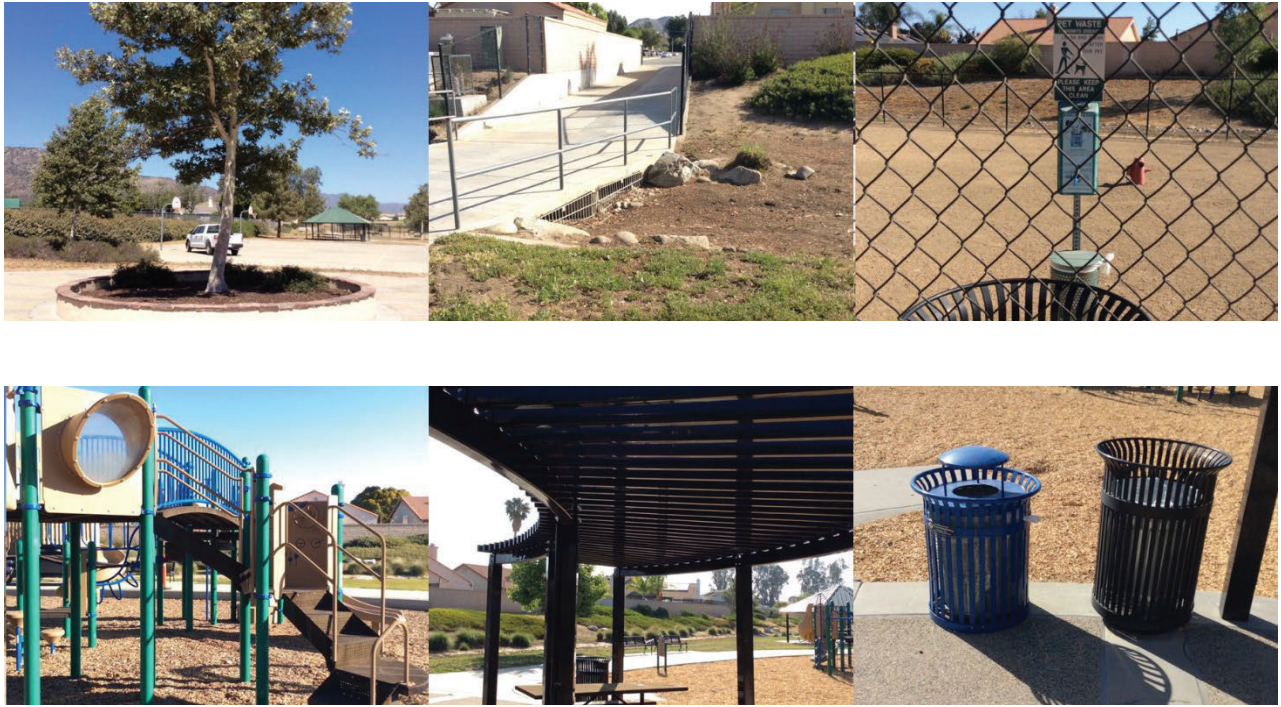
### Landscape Irrigation Rate

	July 2021	January 2022
Tier 1	\$3.18	\$3.36
Tier 2	\$6.12	\$6.46
Tier 3	\$8.58	\$9.06

### Commercial Water Rate

	July 2021	January 2022
Tier 1	\$3.13	\$3.31

## REGENCY HERITAGE



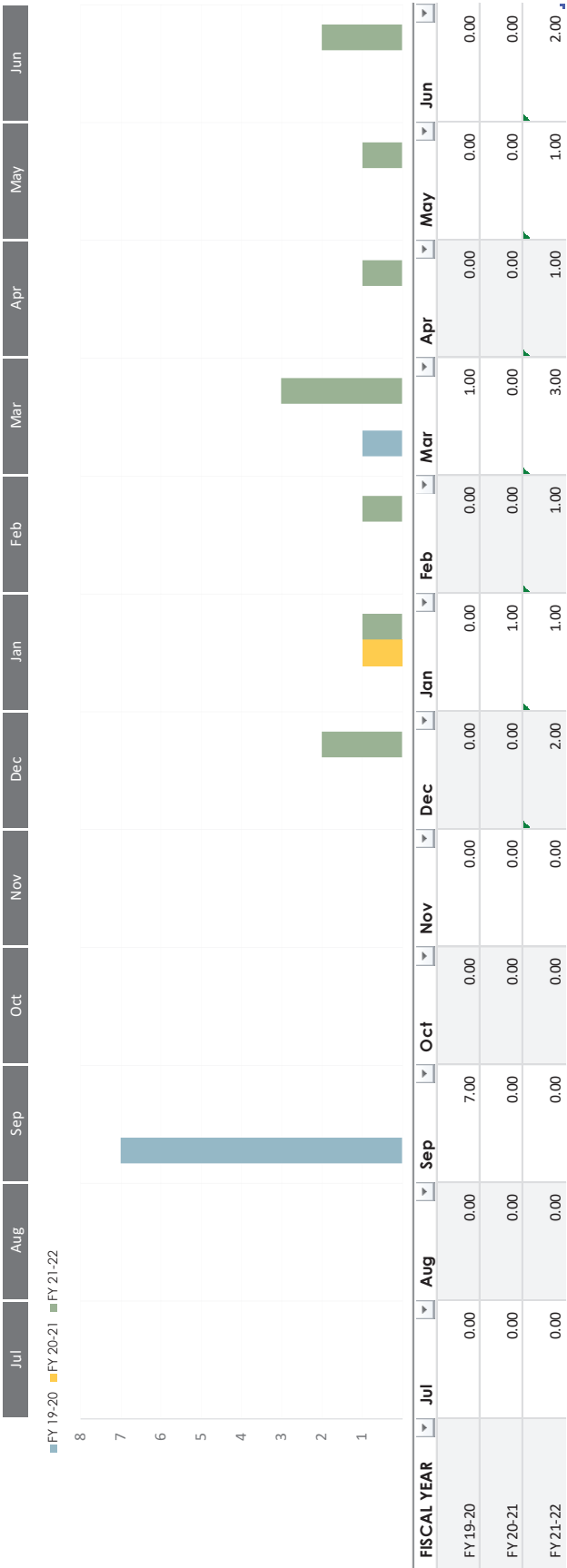
The landscape contracted provide weekly services to this location that include ground cover maintenance, shrub trimming, cleaning to swale way and Trailwood Court drainage channel.

The janitorial contractor conducts a daily service that includes removal and replacing trash can liners, debris removal throughout the park, and confirming gate access during and after rain events.

The playground received 200 cubic yards of certified surface wood fibers from Turboscape; they used the blower device attached to their trucks to evenly distribute the material within the area. The dog parks DG surface were repaired after rain events by Asap Services. The contractor would level and compact any ruts created by the weather in both large and small dog park gated locations.

# WATER USAGE

## CENTUM CUBIC FEET (CCF) USED - REGENCY HERITAGE PARK



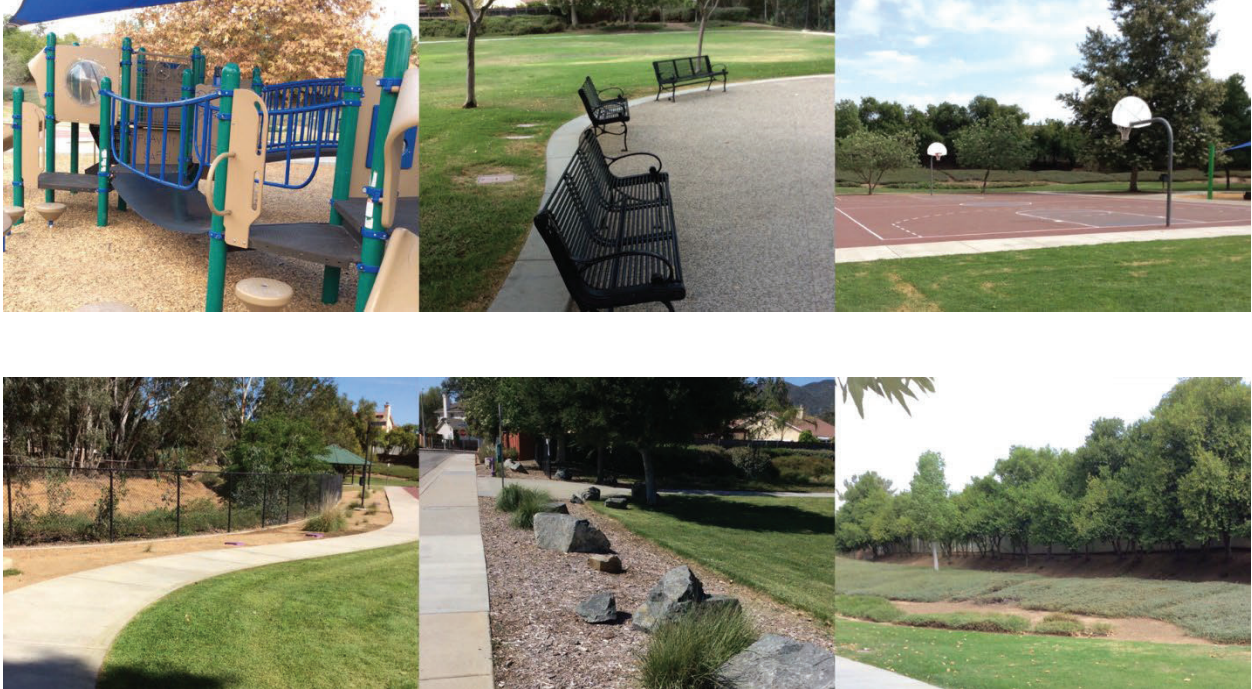
\*Rates during FY 21-22

### Landscape Irrigation Rate

	July 2021	January 2022
Tier 1	\$3.18	\$3.36
Tier 2	\$6.12	\$6.46
Tier 3	\$8.58	\$9.06



## WINDSONG



The landscape contractor performed weekly services that include the mowing during warm seasons, leaf and debris removal during the fall season quarterly turf fertilization, shrub trimming, and irrigation oversight.

The janitorial contractor performed daily services to Windsong Park that includes the removal and replacement of trash can liners, clearing of all debris within park, and clearing of walkway. Windsong Park's portable restroom and handwashing station are provided through Rightway are serviced weekly.

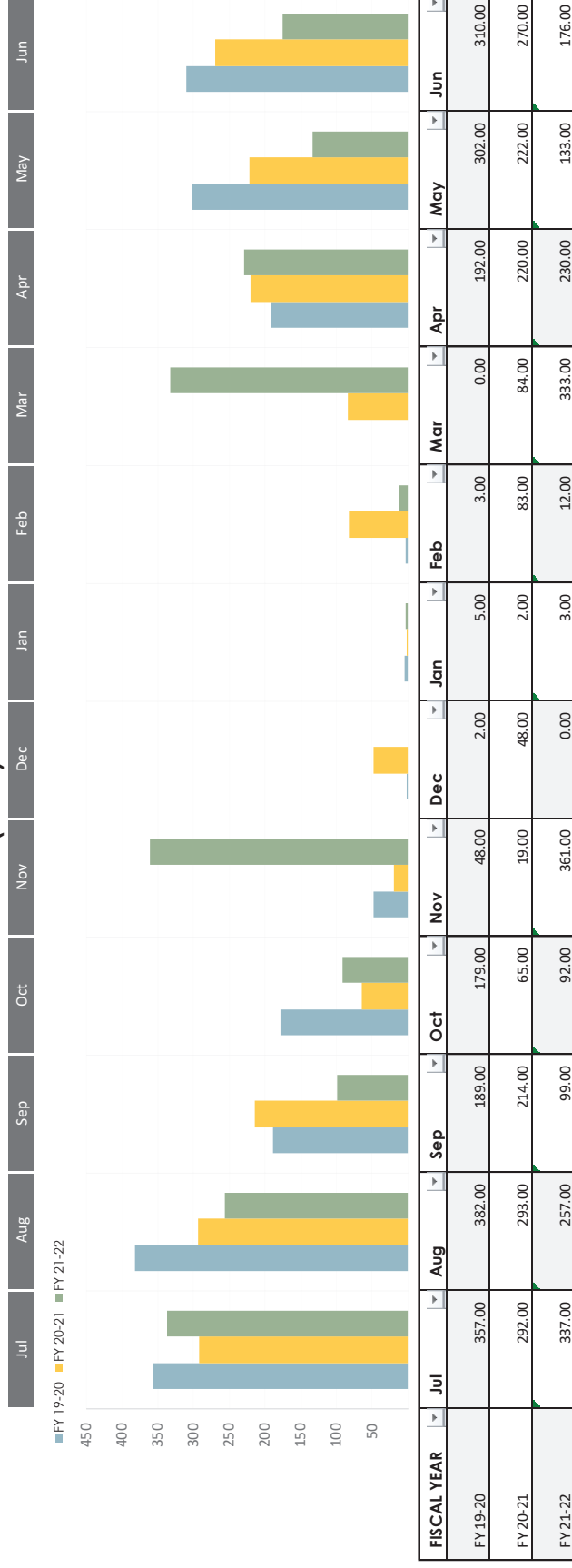
The playground received 100 cubic yards of certified surface wood fibers from Turboscpae. The material was blown in with the blower device attached to their trucks and evenly distribute within the area.

Additional services within the park include gopher and pest services provide by Pest Options and Daniel Pest Control.



# WATER USAGE

## CENTUM CUBIC FEET (CCF) USED - WINDSONG PARK



\*Rates during FY 21-22

### Recycled Irrigation Rate

	July 2021	January 2022
Tier 1	\$2.44	\$2.56
Tier 2	\$4.22	\$4.42
Tier 3	\$5.40	\$5.66

## MALAGA “GATEWAY” PARK



The landscape contractor performed weekly services the include shrub trimming, DG walkway maintenance, and irrigation oversight.

The janitorial contractor provides daily services that include removal and replacement of trash can liners, debris removal throughout the site, and DG walkway upkeep.

# WATER USAGE

## CENTUM CUBIC FEET (CCF) USED - MALAGA PARK



FISCAL YEAR	Jul	Aug	Sep	Oct	Nov	Dec	Jan	Feb	Mar	Apr	May	Jun
FY19-20	67.00	60.00	14.00	72.00	51.00	0.00	47.00	69.00	2.00	5.00	10.00	32.00
FY20-21	20.00	26.00	44.00	47.00	0.00	0.00	0.00	19.00	3.00	28.00	27.00	17.00
FY21-22	100.00	72.00	74.00	70.00	51.00	0.00	6.00	34.00	32.00	27.00	18.00	45.00

\*Rates during FY 20-21

### Landscape Irrigation Rate

	July 2021	January 2022
Tier 1	\$3.18	\$3.36
Tier 2	\$6.12	\$6.46
Tier 3	\$8.58	\$9.06

# FY 21-22 SPECIAL EVENTS

**JULY 10TH**  
6PM - 10PM  
Marna O'Brien

**SEPT. 18TH**  
7PM - 10PM  
Marna O'Brien

**OCT 30TH**  
6PM - 9PM  
Marna O'Brien

**NOV. 11TH**  
5PM - 7PM  
Marna O'Brien

**APRIL 9<sup>TH</sup>**  
8am - 11am  
Marna O'Brien

**APRIL 9<sup>TH</sup>**  
8pm - 9:30pm  
Marna O'Brien

**APRIL 23<sup>RD</sup>**  
7pm - 9pm  
Marna O'Brien

**APRIL 30<sup>TH</sup>**  
7am - 11am  
Marna O'Brien

**MAY 21<sup>ST</sup>**  
5pm - 7:30pm  
Marna O'Brien

**JUNE 4<sup>TH</sup>**  
7pm - 9:30pm  
Windsong Park

**JUNE 25<sup>th</sup>-26<sup>th</sup>**  
5pm -  
Marna O'Brien



# **MEASURE Z'S OVERSIGHT AND ADVISORY COMMITTEE MEMBER COMMENTS**

Consistent with the requirements of City of Wildomar Municipal Code 3.18.040 – Annual Report, the following are comments from the Committee (presiding at 6-30-2021) regarding “...(a) the amount of funds collected and expended, and (b) the status of the community park and community park facilities, programs and services funded by the tax proceeds raised pursuant to this chapter, including the costs of staff, utilities, materials, contract services and other items related to the repair and maintenance of community parks and community park facilities.”

The first installment of this section is a summary of the combined Advisory Committee Member comments for each park location. The later pages are comments from the following committee members:

ATTACHMENT A – James Howey  
ATTACHMENT B – Nolan King  
ATTACHMENT C – Kathleen Kovich  
ATTACHMENT D – Timothy Underdown  
ATTACHMENT E – Shelia Urlaub





**City of Wildomar  
Measure Z - Parks Annual Inspection  
FY 21-22 Summary  
Marna O'Brien Park**

	JAMES HOWEY	NOLAN KING	KATHLEEN KOVICH	TIMOTHY UNDERDOWN	SHEILA URLAUB
	Rating	Rating	Rating	Rating	Rating
<b>1 Landscape Detail</b>					
1.1 Turf Maintenance	B	A	E	A	A
1.2 Shrub Gardens	A	E	E	A	A
1.3 Trees	A	E	E	A	A
1.4 Baseball Diamonds/ Dugouts/Bleachers	A	A	E	A	A
<b>2 Structural Detail</b>					
2.1 Building Appearance	A	E	E	A	E
2.2 Restrooms	B	A	E	E	E
2.3 Snack Bar Area	A	A	A	A	E
2.4 Gazebos	A	A	E	A	A
2.5 Playground	E	E	E	A	A
2.6 Water Tower	A	E	E	E	E
2.7 Fencing	B	E	E	A	E
<b>3 Park Assets</b>					
3.1 Basketball Courts	A	E	E	A	E
3.2 Exercise Equipment	B	A	A	A	A
3.3 Parking Lot	A	A	E	A	A
3.4 Light Poles	A	A	E	A	A
3.5 Picnic Tables and Benches	A	A	E	A	A
3.6 Drinking Fountains	A	A	A	B	A
3.7 Trash Cans	A	A	A	A	A
3.8 Dog Bag Dispenser	E	B	E	A	A
3.9 Little Free Library	B	E	B	A	A

**\*Rating**  
**E - Excellent    A - Average    B - Below Average    P - Poor**



**City of Wildomar  
Measure Z - Parks Annual Inspection  
FY 21-22 Summary  
Windsong Park**

	JAMES HOWEY	NOLAN KING	KATHLEEN KOVICH	TIMOTHY UNDERDOWN	SHEILA URLAUB
	Rating	Rating	Rating	Rating	Rating
<b>1 Landscape Detail</b>					
1.1 Turf Maintenance	B	E	E	A	A
1.2 Shrub Gardens	A	E	E	A	A
1.3 Trees	A	E	E	A	A
1.4 Creek Garden	B	A	A	A	E
<b>2 Structural Detail</b>					
2.1 Gazebos	A	E	E	A	E
2.2 Playground	E	E	E	A	A
2.3 Trash Cans	A	E	E	A	A
2.4 Fencing	A	E	A	A	E
<b>3 Park Assets</b>					
3.1 Basketball Courts	B	E	E	A	A
3.2 Light Poles	A	E	A	A	A
3.3 Picnic Tables and Benches	A	E	E	A	A
3.4 Dog Bag Dispenser	A	E	E	A	A
3.5 Rocks	A	E	E	A	E
3.6 Little Free Library	A	E	E	A	E

**\*Rating**  
**E - Excellent    A - Average    B - Below Average    P - Poor**



**City of Wildomar  
Measure Z - Parks Annual Inspection  
FY 21-22 Summary  
Heritage Regency Park**

	JAMES HOWEY	NOLAN KING	KATHLEEN KOVICH	TIMOTHY UNDERDOWN	SHEILA URLAUB
	Rating	Rating	Rating	Rating	Rating
<b>1 Landscape Detail</b>					
1.1 Groundcover Maintenance			P	A	
1.2 Shrub Gardens			A	A	
1.3 Trees			A	A	
1.4 Swale			A	B	
<b>2 Structural Detail</b>					
2.1 Gazebos			A	E	
2.2 Shade Structure			E	A	
2.3 Playground			E	A	
2.4 Dog Park			E	A	
2.5 Fencing			P	A	
<b>3 Park Assets</b>					
3.1 Basketball Courts			A	A	
3.2 Picnic Tables and Benches			E	A	
3.3 Trash Cans			E	A	
3.4 Dog Bag Dispenser			E	A	

**\*Rating**  
**E - Excellent    A - Average    B - Below Average    P - Poor**



**City of Wildomar  
Measure Z - Parks Annual Inspection  
FY 21-22 Summary  
Malaga Park**

	JAMES HOWEY	NOLAN KING	KATHLEEN KOVICH	TIMOTHY UNDERDOWN	SHEILA URLAUB
	Rating	Rating	Rating	Rating	Rating
<b>1 Landscape Detail</b>					
1.1 Groundcover and Tree Maintenance	A	A	E	A	A
1.2 Shrub Gardens	A	E	E	A	A
1.3 DG Walkway	A	A	A	A	A
<b>2 Structural Detail</b>					
2.1 Shade Structures	A	E	E	A	E
2.2 Signage	E	E	E	A	E
2.3 Fencing	A	A	E	A	E
<b>3 Park Assets</b>					
3.1 Benches and Trash Cans	E	E	E	A	E
3.2 Little Free Library	A	E	E	A	E

**\*Rating**

**E - Excellent    A - Average    B - Below Average    P - Poor**

# **ATTACHMENT A**

Measure Z Oversight Advisory Committee  
July 2021 - June 2022

Wildomar parks annual inspections  
conducted by the presiding committee members:

**James Howey**



City of Wildomar  
Measure Z Oversight Advisory Committee

Wildomar Parks  
Annual Inspection Guide

2021 / 2022



Nolan King, Chair  
Kathleen Kovich, Vice Chair  
James Howey, Committee Member  
Timothy Underdown, Committee Member  
Shelia Urlaub, Committee Member

**Marna O'Brien Park  
20505 Palomar Street  
Wildomar, CA. 92595**

## **1.0 LANDSCAPE DETAIL**

The landscape detail consists of areas that are covered by turf, trees, shrubs, and bark. This detail also includes the baseball diamonds and dugouts. Majority of these locations are maintained by the parks landscape contractor.

### **1.1 Turf Maintenance**

"Field" turf used by baseball, football, and soccer leagues.

"Park" turf found alongside the Gazebos and Tot lots.

	Poor	Below Average	Average	Excellent
Please rate the overall appearance and maintenance.	<input type="radio"/>	<input checked="" type="radio"/>	<input type="radio"/>	<input type="radio"/>

Comments: Field & park turf yellowing and dead in some areas, the turf in both areas are not consistantly covered.

### **1.2 Shrub Gardens**

The shrub gardens are located throughout perimeter of the park and parking lot.

	Poor	Below Average	Average	Excellent
Please rate the overall appearance and maintenance.	<input type="radio"/>	<input type="radio"/>	<input checked="" type="radio"/>	<input type="radio"/>

Comments: Shurbs are trimmed and appear healthy throughout the perimeter of the park and parking lot.

### **1.3 Trees**

This section pertains to the overall health and appearance of the trees on this park site.

	Poor	Below Average	Average	Excellent
Please rate the overall appearance and maintenance.	<input type="radio"/>	<input type="radio"/>	<input checked="" type="radio"/>	<input type="radio"/>

Comments: All trees appear healthy and pruning is not needed at this time.

### **1.4 Baseball Diamonds / Dugouts / Bleachers**

There are 3-Baseball Diamonds; each with 2-Dugout and spectator bleachers.

	Poor	Below Average	Average	Excellent
Please rate the overall appearance and maintenance.	<input type="radio"/>	<input type="radio"/>	<input checked="" type="radio"/>	<input type="radio"/>

Comments: All baseball diamonds green wood trim recommend repainting, dugouts and bleaches are in good condition.

## 2.0 STRUCTURAL DETAIL

The structural detail pertains to the building located in the center of the park. The building contains two restrooms, a snack bar, and picnic benches. Also included in this detail are 3-Gazebos, Playground and Water Tower.

### 2.1 Building Appearance

This pertains to the overall appearance of the building such as paint, doors, benches, stainless roll-up doors, vents, and rain gutters.

	Poor	Below Average	Average	Excellent
Please rate the overall appearance and maintenance.	<input type="radio"/>	<input type="radio"/>	<input checked="" type="radio"/>	<input type="radio"/>

Comments: The yellow paint on the building is chipping and recommend repainting. The doors, benches, stainless steel roll-up, vents, and rain gutters are in good condition.

### 2.2 Restrooms

Men's: 2-stalls and 1- urinal with 2-sinks

Women's: 3-stalls with 2-sinks

	Poor	Below Average	Average	Excellent
Please rate the overall appearance and maintenance.	<input type="radio"/>	<input checked="" type="radio"/>	<input type="radio"/>	<input type="radio"/>

Comments: Mens restroom stall doors need painting, tile recommend to be cleaned. Urinal needs clearing as it doesn't drain thoroughly. Womens bathroom is in excellent condition.

### 2.3 Snack Bar Area

This area contains 2-roll up doors with counter tops and 4-Picnic Tables / Benches.

	Poor	Below Average	Average	Excellent
Please rate the overall appearance and maintenance.	<input type="radio"/>	<input type="radio"/>	<input checked="" type="radio"/>	<input type="radio"/>

Comments: There is an area next to the roll up that recommend painting. Tables and benches need sanding and repainting due to scratches & graffiti.

### 2.4 Gazebos

There are 3-Gazebos at this location; each with 2-Picnic Tables w/ Benches, BBQ's, and Trash Can.

	Poor	Below Average	Average	Excellent
Please rate the overall appearance and maintenance.	<input type="radio"/>	<input type="radio"/>	<input checked="" type="radio"/>	<input type="radio"/>

Comments: For all three recommend the picnic tables w/benches, all poles be sanded and repainted due to scratches and graffiti. All of the BBQ's are in poor condition and need to be replaced.

## 2.5 Playground

The Playground is for the age group of 2-5 years old.

	Poor	Below Average	Average	Excellent
Please rate the overall appearance and maintenance.	<input type="radio"/>	<input type="radio"/>	<input type="radio"/>	<input checked="" type="radio"/>

Comments: Great condition.

## 2.6 Water Tower

The Water Tower is in the center of the parking lot in front of the building structure.

	Poor	Below Average	Average	Excellent
Please rate the overall appearance and maintenance.	<input type="radio"/>	<input type="radio"/>	<input checked="" type="radio"/>	<input type="radio"/>

Comments: The roof and stand need to be repainted.

## 2.7 Fencing

This consists of the vinyl fencing located along Palomar Street.

	Poor	Below Average	Average	Excellent
Please rate the overall appearance and maintenance.	<input type="radio"/>	<input checked="" type="radio"/>	<input type="radio"/>	<input type="radio"/>

Comments: Some fencing poles are chipped and many top parts are missing.

## 3.0 PARK ASSETS

This category consists of park play equipment, water fountains, benches and trash containers. Most of these items are serviced by the janitorial contractor.

### 3.1 Basketball Courts

This park contains 2-courts with 4-hoops on a Plexi-pave surface.

	Poor	Below Average	Average	Excellent
Please rate the overall appearance and maintenance.	<input type="radio"/>	<input type="radio"/>	<input checked="" type="radio"/>	<input type="radio"/>

Comments: Better than average, the paint on 1 backboard is chipping.

### 3.2 Exercise Equipment

This location has 3-exercise devices around the Park Turf area.

	Poor	Below Average	Average	Excellent
Please rate the overall appearance and maintenance.	<input type="radio"/>	<input checked="" type="radio"/>	<input type="radio"/>	<input type="radio"/>

Comments: All equipment recommend repainting.

---

### 3.3 Parking Lot

The parking lot has two entrances from Palomar and may hold up to 149 vehicles.

	Poor	Below Average	Average	Excellent
Please rate the overall appearance and maintenance.	<input type="radio"/>	<input type="radio"/>	<input checked="" type="radio"/>	<input type="radio"/>

Comments: Parking lines recommend repainting.

---

### 3.4 Light Poles

The 71 light poles vary from 14 -20 feet tall with a plastic base cover. The poles are located throughout the park.

	Poor	Below Average	Average	Excellent
Please rate the overall appearance and maintenance.	<input type="radio"/>	<input type="radio"/>	<input checked="" type="radio"/>	<input type="radio"/>

Comments: All looked weathered and dirty. Looks like a cleaning would get them in better condition.

---

### 3.5 Picnic Tables and Benches

The Picnic Table are in the Gazebos, Snack Bar, and Park Turf.

The Bench are located around the Basketball Court, and Playground.

	Poor	Below Average	Average	Excellent
Please rate the overall appearance and maintenance.	<input type="radio"/>	<input type="radio"/>	<input checked="" type="radio"/>	<input type="radio"/>

Comments: All tables and benches would look in better condition if they were sanded and repainted throughout the park.

---

### 3.6 Drinking Fountains

The drinking fountains are located by the Snack Bar and Basketball Courts.

	Poor	Below Average	Average	Excellent
Please rate the overall appearance and maintenance.	<input type="radio"/>	<input type="radio"/>	<input checked="" type="radio"/>	<input type="radio"/>

Comments: Paint is chipping around the faucets.

---



### 3.7 Trash Cans

The Trash Cans are located at the Gazebos, Playground, Snack Bar, Basketball Court and Field Turf walkway.

	Poor	Below Average	Average	Excellent
Please rate the overall appearance and maintenance.	<input type="radio"/>	<input type="radio"/>	<input checked="" type="radio"/>	<input type="radio"/>

Comments: They all are fine.

---

### 3.8 Dog Bag Dispenser

There are 3 – Dispensers in this park which are located around the Field Turf walkway.

	Poor	Below Average	Average	Excellent
Please rate the overall appearance and maintenance.	<input type="radio"/>	<input type="radio"/>	<input type="radio"/>	<input checked="" type="radio"/>

Comments: All dispensers were filled.

---

### 3.9 Little Free Library

The little free library is located between the parking lot and basketball courts.

	Poor	Below Average	Average	Excellent
Please rate the overall appearance and maintenance.	<input type="radio"/>	<input checked="" type="radio"/>	<input type="radio"/>	<input type="radio"/>

Comments: It was closed and not in good condition, recommend repainting.

---

**Windsong Park**  
**35459 Prairie Road**  
**Wildomar, CA. 92595**

## **1.0 LANDSCAPE DETAIL**

The landscape detail consists of areas that are covered by turf, trees, shrubs, and bark. This detail also includes the creek behind the chain link fence on the west side of the park. These areas are maintained by the parks landscape contractor.

### **1.1 Turf Maintenance**

The turf at this park site is irrigated with reclaimed / recycled water from EVMWD.

	Poor	Below Average	Average	Excellent
Please rate the overall appearance and maintenance.	<input type="radio"/>	<input checked="" type="radio"/>	<input type="radio"/>	<input type="radio"/>

Comments: Turf yellowing and dead in some areas and are not consistantly covered

---

### **1.2 Shrub Gardens**

The Shrub Gardens are located on the perimeter of this park site.

	Poor	Below Average	Average	Excellent
Please rate the overall appearance and maintenance.	<input type="radio"/>	<input type="radio"/>	<input checked="" type="radio"/>	<input type="radio"/>

Comments: Shrub garden appear trimmed and in good shape.

---

### **1.3 Trees**

This section pertains to the overall health and appearance of the tree on this park site.

	Poor	Below Average	Average	Excellent
Please rate the overall appearance and maintenance.	<input type="radio"/>	<input type="radio"/>	<input checked="" type="radio"/>	<input type="radio"/>

Comments: There are no leaves on the tree, hard to comment on their condition.

---

### **1.4 Creek Garden**

This area is not accessible to the public. It is sectioned off by 450 linear feet of fencing.

	Poor	Below Average	Average	Excellent
Please rate the overall appearance and maintenance.	<input type="radio"/>	<input checked="" type="radio"/>	<input type="radio"/>	<input type="radio"/>

Comments: There is chopped piles of wood and downed tree limb that appears to be a fire hazard.

---

## 2.0 STRUCTURAL DETAIL

This detail is based on the structures that are on this park location which consists of the Playground and 3-Gazebos.

### 2.1 Gazebos

There are 3-Gazebos at this location, Picnic Tables, BBQ's, and Trash Can. The Gazebo closest to the creek has 2-BBQ grills but does not contain any Picnic Tables to reduce vandalism and after hours usage.

	Poor	Below Average	Average	Excellent
Please rate the overall appearance and maintenance.	<input type="radio"/>	<input type="radio"/>	<input checked="" type="radio"/>	<input type="radio"/>

Comments: Recommend the picnic tables and Gazebos poles be sanded and repainted due to cratches and graffiti.

### 2.2 Playground

The playground is for the age group of 2-5 years old.

	Poor	Below Average	Average	Excellent
Please rate the overall appearance and maintenance.	<input type="radio"/>	<input type="radio"/>	<input type="radio"/>	<input checked="" type="radio"/>

Comments: Appears new.

### 2.3 Trash Cans

The Trash Cans are in each of the Gazebos.

	Poor	Below Average	Average	Excellent
Please rate the overall appearance and maintenance.	<input type="radio"/>	<input type="radio"/>	<input checked="" type="radio"/>	<input type="radio"/>

Comments: All are in good condition.

### 2.4 Fencing

This Park location is sectioned off by chain link fencing. This detail consists of 450 linear feet that separate the west side creek, and 41 linear feet at the south entry.

	Poor	Below Average	Average	Excellent
Please rate the overall appearance and maintenance.	<input type="radio"/>	<input type="radio"/>	<input checked="" type="radio"/>	<input type="radio"/>

Comments: Recommend repainting, chipping on the top.

### 3.0 PARK ASSETS

This category consists of park play equipment, benches, tables, and landscape features. Most of these items are serviced by the janitorial contractor.

#### 3.1 Basketball Court

This park contains 1-court with 2-hoops on a Plexi-pave surface.

	Poor	Below Average	Average	Excellent
Please rate the overall appearance and maintenance.	<input type="radio"/>	<input checked="" type="radio"/>	<input type="radio"/>	<input type="radio"/>

Comments: Recommend the courts be repainted.

#### 3.2 Light Poles

The 3-light poles on this location are 14ft tall and require a plastic base cover. The poles are found on the west side along the fence line.

	Poor	Below Average	Average	Excellent
Please rate the overall appearance and maintenance.	<input type="radio"/>	<input type="radio"/>	<input checked="" type="radio"/>	<input type="radio"/>

Comments: All appear in good condition.

#### 3.3 Picnic Tables and Benches

The Picnic Table are in the Gazebos.

The Bench are located at the North Entry, and South of Playground.

	Poor	Below Average	Average	Excellent
Please rate the overall appearance and maintenance.	<input type="radio"/>	<input type="radio"/>	<input checked="" type="radio"/>	<input type="radio"/>

Comments: Recommend the picnic tables and Gazebos poles be sanded and repainted due to cratches and graffiti.

#### 3.4 Dog Bag Dispenser

There are 2 – Dispensers in this that are located at each entrance.

	Poor	Below Average	Average	Excellent
Please rate the overall appearance and maintenance.	<input type="radio"/>	<input type="radio"/>	<input checked="" type="radio"/>	<input type="radio"/>

Comments: All were filled.

### 3.5 Rocks

Surrounding the east side (Prairie Road) of this park location. There are 38 rocks that act as décor and safety barrier.

Poor

Below Average

Average

Excellent

Please rate the overall appearance and maintenance.



Comments: All in good condition with no graffiti.

### 3.6 Little Free Library

The little free library is located under the sycamore tree north of the playground.

Poor

Below Average

Average

Excellent

Please rate the overall appearance and maintenance.



Comments: Appears in good condition with books in the library.



**Heritage Regency Park  
20171 Autumn Oak Place  
Wildomar, CA. 92595**

**1.0 LANDSCAPE DETAIL**

The landscape detail consists of areas that are covered by groundcover, trees, shrubs, and the swale that runs along the entire park. These areas are maintained by the parks landscape contractor.

**1.1 Groundcover Maintenance**

This pertains to the 30,248 sq. ft. of vegetation that acts as groundcover. The reasoning behind the vegetation growth is to prevent dirt from washing into the swale during rain or rain runoff.

	Poor	Below Average	Average	Excellent
Please rate the overall appearance and maintenance.	<input type="radio"/>	<input type="radio"/>	<input type="radio"/>	<input type="radio"/>

Comments: The gate was locked, I could not enter the park.

---

**1.2 Shrub Gardens**

The shrubs area consists of hillside that is located around the northern walls and southern wall from the Dog Park.

	Poor	Below Average	Average	Excellent
Please rate the overall appearance and maintenance.	<input type="radio"/>	<input type="radio"/>	<input type="radio"/>	<input type="radio"/>

Comments: \_\_\_\_\_

---

**1.3 Trees**

This pertains to the over health and appearance of the trees located on this park site.

	Poor	Below Average	Average	Excellent
Please rate the overall appearance and maintenance.	<input type="radio"/>	<input type="radio"/>	<input type="radio"/>	<input type="radio"/>

Comments: \_\_\_\_\_

---

**1.4 Swale**

This area pertains to the drain that runs along the 950 linear feet of park.

	Poor	Below Average	Average	Excellent
Please rate the overall appearance and maintenance.	<input type="radio"/>	<input type="radio"/>	<input type="radio"/>	<input type="radio"/>

Comments: \_\_\_\_\_

\_\_\_\_\_

## 2.0 **STRUCTURAL DETAIL**

This detail is based on the structures on this site that consist of the Playground, Gazebos and Shade Structure.

### 2.1 **Gazebos**

There are 2-Gazebos at this location; each with 3-Picnic Tables and Trash Can.

	Poor	Below Average	Average	Excellent
Please rate the overall appearance and maintenance.	<input type="radio"/>	<input type="radio"/>	<input type="radio"/>	<input type="radio"/>

Comments: \_\_\_\_\_

\_\_\_\_\_

### 2.2 **Shade Structure**

The shade structure is in the center of the park with 3-Picnic Tables.

	Poor	Below Average	Average	Excellent
Please rate the overall appearance and maintenance.	<input type="radio"/>	<input type="radio"/>	<input type="radio"/>	<input type="radio"/>

Comments: \_\_\_\_\_

\_\_\_\_\_

### 2.3 **Playground**

The Playground is labeled for the age group of 5 -12 years old.

	Poor	Below Average	Average	Excellent
Please rate the overall appearance and maintenance.	<input type="radio"/>	<input type="radio"/>	<input type="radio"/>	<input type="radio"/>

Comments: \_\_\_\_\_

\_\_\_\_\_

### 2.4 **Dog Park**

This area pertains to the 12,177sqft. of DG that is split into two separate sections:  
Large Dogs and Small Dogs.

	Poor	Below Average	Average	Excellent
Please rate the overall appearance and maintenance.	<input type="radio"/>	<input type="radio"/>	<input type="radio"/>	<input type="radio"/>

Comments: \_\_\_\_\_

\_\_\_\_\_

## 2.5 Fencing

Most of this park is enclosed by chain link fencing. The Dog Park sectionals are also enclosed by black vinyl coated fencing.

	Poor	Below Average	Average	Excellent
Please rate the overall appearance and maintenance.	<input type="radio"/>	<input type="radio"/>	<input type="radio"/>	<input type="radio"/>

Comments: \_\_\_\_\_

## 3.0 PARK ASSETS

This category consists of park assets that require maintenance or servicing.

### 3.1 Basketball Court

This park contains 2-half courts with 2-hoops on a concrete surface.

	Poor	Below Average	Average	Excellent
Please rate the overall appearance and maintenance.	<input type="radio"/>	<input type="radio"/>	<input type="radio"/>	<input type="radio"/>

Comments: \_\_\_\_\_

### 3.2 Picnic Tables and Benches

The Picnic Tables are in Gazebos, and Shade Structure

The Benches are located around the Playground, East Walkway, Large Dog Park, Small Dog Park

	Poor	Below Average	Average	Excellent
Please rate the overall appearance and maintenance.	<input type="radio"/>	<input type="radio"/>	<input type="radio"/>	<input type="radio"/>

Comments: \_\_\_\_\_

### 3.3 Trash Cans

The Trash Cans are in the Gazebos, Shade Structure, and Large Dog Park

	Poor	Below Average	Average	Excellent
Please rate the overall appearance and maintenance.	<input type="radio"/>	<input type="radio"/>	<input type="radio"/>	<input type="radio"/>

Comments: \_\_\_\_\_

### 3.4 Dog Bag Dispenser

The Dispensers are at the Autumn Oak entrance, and Small Dog Park.

	Poor	Below Average	Average	Excellent
Please rate the overall appearance and maintenace.	<input type="radio"/>	<input type="radio"/>	<input type="radio"/>	<input type="radio"/>

Comments: \_\_\_\_\_  
\_\_\_\_\_

**Malaga Park**  
**32308 Mission Trail**  
**Wildomar, CA. 92595**

## **1.0 LANDSCAPE DETAIL**

The landscape detail consists of areas that are covered by groundcover, trees, shrubs, and bark. This detail also includes the DG walkway. This location is maintained by the parks landscape contractor.

### **1.1 Groundcover and Tree Maintenance**

This pertains to the Plants and Trees located throughout the park site.

	Poor	Below Average	Average	Excellent
Please rate the overall appearance and maintenance.	<input type="radio"/>	<input type="radio"/>	<input checked="" type="radio"/>	<input type="radio"/>

Comments: Plants and trees appear in good condition.

---

### **1.2 Shrub Gardens**

The shrubs area is located along south perimeter of park site.

	Poor	Below Average	Average	Excellent
Please rate the overall appearance and maintenance.	<input type="radio"/>	<input type="radio"/>	<input checked="" type="radio"/>	<input type="radio"/>

Comments: The shrubs were trimmed, recommend the bark be replaced as it is faded and not covering all areas.

---

### **1.3 DG Walkway**

The pathway crosses through the center of the park starting on Wildomar Road leading up to Mission Trail.

	Poor	Below Average	Average	Excellent
Please rate the overall appearance and maintenance.	<input type="radio"/>	<input type="radio"/>	<input checked="" type="radio"/>	<input type="radio"/>

Comments: There is rain run off in some areas that recommend refilling.

---

## **2.0 STRUCTURAL DETAIL**

This section pertains to the Shade Structures and Concrete Sign on this park site.

### **2.1 Shade Structures**

There are two standalone wooden pergolas.



	Poor	Below Average	Average	Excellent
Please rate the overall appearance and maintenance.	<input type="radio"/>	<input type="radio"/>	<input checked="" type="radio"/>	<input type="radio"/>

Comments: Appear to be in good condition.

## 2.2 Signage

This pertains to the curved concrete sign on the corner of Wildomar Road and Malaga.

	Poor	Below Average	Average	Excellent
Please rate the overall appearance and maintenance.	<input type="radio"/>	<input type="radio"/>	<input type="radio"/>	<input checked="" type="radio"/>

Comments: In great condition.

## 2.3 Fencing

This is pertaining to the wooden post and rope fencing along the Malaga Street.

	Poor	Below Average	Average	Excellent
Please rate the overall appearance and maintenance.	<input type="radio"/>	<input type="radio"/>	<input checked="" type="radio"/>	<input type="radio"/>

Comments: Appears to be in good condition.

## 3.0 PARK ASSETS

This category consists of park benches, trash containers and other features. These items are serviced by the janitorial contractor.

### 3.1 Benches and Trash Cans

The benches and trash containers are located under each wooden pergola.

	Poor	Below Average	Average	Excellent
Please rate the overall appearance and maintenance.	<input type="radio"/>	<input type="radio"/>	<input type="radio"/>	<input checked="" type="radio"/>

Comments: In great condition.

### 3.2 Little Free Library

The little free library is located next to the southern shade structure.

	Poor	Below Average	Average	Excellent
Please rate the overall appearance and maintenance.	<input type="radio"/>	<input type="radio"/>	<input checked="" type="radio"/>	<input type="radio"/>

Comments: Appears to be in good condition with books in the library.

# **ATTACHMENT B**

Measure Z Oversight Advisory Committee  
July 2021 - June 2022

Wildomar parks annual inspections  
conducted by the presiding committee members:

**Nolan King**

City of Wildomar  
Measure Z Oversight Advisory Committee

Wildomar Parks  
Annual Inspection Guide

2021 / 2022



Nolan King, Chair  
Kathleen Kovich, Vice Chair  
James Howey, Committee Member  
Timothy Underdown, Committee Member  
Shelia Urlaub, Committee Member

**Marna O'Brien Park  
20505 Palomar Street  
Wildomar, CA. 92595**

**1.0 LANDSCAPE DETAIL**

The landscape detail consists of areas that are covered by turf, trees, shrubs, and bark. This detail also includes the baseball diamonds and dugouts. Majority of these locations are maintained by the parks landscape contractor.

**1.1 Turf Maintenance**

"Field" turf used by baseball, football, and soccer leagues.

"Park" turf found alongside the Gazebos and Tot lots.

	Poor	Below Average	Average	Excellent
Please rate the overall appearance and maintenance.	<input type="radio"/>	<input type="radio"/>	<input type="radio"/>	<input type="radio"/>

Comments: Fields a bit lumpy. Some gopher activity. Poor drainage fields 1 and 3

---

**1.2 Shrub Gardens**

The shrub gardens are located throughout perimeter of the park and parking lot.

	Poor	Below Average	Average	Excellent
Please rate the overall appearance and maintenance.	<input type="radio"/>	<input type="radio"/>	<input type="radio"/>	<input type="radio"/>

Comments: Shurbs are trimmed and appear healthy throughout the perimeter of the park and parking lot.

---

**1.3 Trees**

This section pertains to the overall health and appearance of the trees on this park site.

	Poor	Below Average	Average	Excellent
Please rate the overall appearance and maintenance.	<input type="radio"/>	<input type="radio"/>	<input type="radio"/>	<input type="radio"/>

Comments: All trees appear healthy and pruning is not needed at this time.

---

**1.4 Baseball Diamonds / Dugouts / Bleachers**

There are 3-Baseball Diamonds; each with 2-Dugout and spectator bleachers.

	Poor	Below Average	Average	Excellent
Please rate the overall appearance and maintenance.	<input type="radio"/>	<input type="radio"/>	<input type="radio"/>	<input type="radio"/>

Comments: All baseball diamonds green wood trim recommend repainting, dugouts and bleaches are in good condition.

---

## 2.0 STRUCTURAL DETAIL

The structural detail pertains to the building located in the center of the park. The building contains two restrooms, a snack bar, and picnic benches. Also included in this detail are 3-Gazebos, Playground and Water Tower.

### 2.1 Building Appearance

This pertains to the overall appearance of the building such as paint, doors, benches, stainless roll-up doors, vents, and rain gutters.

	Poor	Below Average	Average	Excellent
Please rate the overall appearance and maintenance.	<input type="radio"/>	<input type="radio"/>	<input type="radio"/>	<input type="radio"/>

Comments: The yellow paint on the building is chipping and recommend repainting. The doors, benches, stainless steel roll-up, vents, and rain gutters are in good condition.

### 2.2 Restrooms

Men's: 2-stalls and 1- urinal with 2-sinks

Women's: 3-stalls with 2-sinks

	Poor	Below Average	Average	Excellent
Please rate the overall appearance and maintenance.	<input type="radio"/>	<input type="radio"/>	<input type="radio"/>	<input type="radio"/>

Comments: Mens restroom stall doors need painting, tile recommend to be cleaned. Urinal needs clearing as it doesn't drain thoroughly. Womens bathroom is in excellent condition.

### 2.3 Snack Bar Area

This area contains 2-roll up doors with counter tops and 4-Picnic Tables / Benches.

	Poor	Below Average	Average	Excellent
Please rate the overall appearance and maintenance.	<input type="radio"/>	<input type="radio"/>	<input type="radio"/>	<input type="radio"/>

Comments: There is an area next to the roll up that recommend painting. Tables and benches need sanding and repainting due to cratches & grafiti.

### 2.4 Gazebos

There are 3-Gazebos at this location; each with 2-Picnic Tables w/ Benches, BBQ's, and Trash Can.

	Poor	Below Average	Average	Excellent
Please rate the overall appearance and maintenance.	<input type="radio"/>	<input type="radio"/>	<input type="radio"/>	<input type="radio"/>

Comments: For all three recommend the picinc tables w/benches, all poles be sanded and repainted due to scratches and grafiti. All of the BBQ's are in poor condition and need to ne replaced.



## 2.5 Playground

The Playground is for the age group of 2-5 years old.

	Poor	Below Average	Average	Excellent
Please rate the overall appearance and maintenance.	<input type="radio"/>	<input type="radio"/>	<input type="radio"/>	<input type="radio"/>

Comments: Great condition.

---

## 2.6 Water Tower

The Water Tower is in the center of the parking lot in front of the building structure.

	Poor	Below Average	Average	Excellent
Please rate the overall appearance and maintenance.	<input type="radio"/>	<input type="radio"/>	<input type="radio"/>	<input type="radio"/>

Comments: The roof and stand need to be repainted.

---

## 2.7 Fencing

This consists of the vinyl fencing located along Palomar Street.

	Poor	Below Average	Average	Excellent
Please rate the overall appearance and maintenance.	<input type="radio"/>	<input type="radio"/>	<input type="radio"/>	<input type="radio"/>

Comments: Some fencing poles are chipped and many top parts are missing.

---

## 3.0 PARK ASSETS

This category consists of park play equipment, water fountains, benches and trash containers. Most of these items are serviced by the janitorial contractor.

### 3.1 Basketball Courts

This park contains 2-courts with 4-hoops on a Plexi-pave surface.

	Poor	Below Average	Average	Excellent
Please rate the overall appearance and maintenance.	<input type="radio"/>	<input type="radio"/>	<input type="radio"/>	<input type="radio"/>

Comments: Better than average, the paint on 1 backboard is chipping.

---

### 3.2 Exercise Equipment

This location has 3-exercise devices around the Park Turf area.

	Poor	Below Average	Average	Excellent
Please rate the overall appearance and maintenance.	<input type="radio"/>	<input type="radio"/>	<input type="radio"/>	<input type="radio"/>

Comments: All equipment recommend repainting.

---

### 3.3 Parking Lot

The parking lot has two entrances from Palomar and may hold up to 149 vehicles.

	Poor	Below Average	Average	Excellent
Please rate the overall appearance and maintenance.	<input type="radio"/>	<input type="radio"/>	<input type="radio"/>	<input type="radio"/>

Comments: Parking lines recommend repainting.

---

### 3.4 Light Poles

The 71 light poles vary from 14 -20 feet tall with a plastic base cover. The poles are located throughout the park.

	Poor	Below Average	Average	Excellent
Please rate the overall appearance and maintenance.	<input type="radio"/>	<input type="radio"/>	<input type="radio"/>	<input type="radio"/>

Comments: All looked weathered and dirty. Looks like a cleaning would get them in better condition.

---

### 3.5 Picnic Tables and Benches

The Picnic Table are in the Gazebos, Snack Bar, and Park Turf.

The Bench are located around the Basketball Court, and Playground.

	Poor	Below Average	Average	Excellent
Please rate the overall appearance and maintenance.	<input type="radio"/>	<input type="radio"/>	<input type="radio"/>	<input type="radio"/>

Comments: All tables and benches would look in better condition if they were sanded and repainted throughout the park.

---

### 3.6 Drinking Fountains

The drinking fountains are located by the Snack Bar and Basketball Courts.

	Poor	Below Average	Average	Excellent
Please rate the overall appearance and maintenance.	<input type="radio"/>	<input type="radio"/>	<input type="radio"/>	<input type="radio"/>

Comments: Paint is chipping around the faucets.

---

### 3.7 Trash Cans

The Trash Cans are located at the Gazebos, Playground, Snack Bar, Basketball Court and Field Turf walkway.

	Poor	Below Average	Average	Excellent
Please rate the overall appearance and maintenance.	<input type="radio"/>	<input type="radio"/>	<input type="radio"/>	<input type="radio"/>

Comments: They all are fine.

---

### 3.8 Dog Bag Dispenser

There are 3 – Dispensers in this park which are located around the Field Turf walkway.

	Poor	Below Average	Average	Excellent
Please rate the overall appearance and maintenance.	<input type="radio"/>	<input type="radio"/>	<input type="radio"/>	<input type="radio"/>

Comments: All dispensers were filled.

---

### 3.9 Little Free Library

The little free library is located between the parking lot and basketball courts.

	Poor	Below Average	Average	Excellent
Please rate the overall appearance and maintenance.	<input type="radio"/>	<input type="radio"/>	<input type="radio"/>	<input type="radio"/>

Comments: It was closed and not in good condition, recommend repainting.

---

**Windsong Park**  
**35459 Prairie Road**  
**Wildomar, CA. 92595**

## **1.0 LANDSCAPE DETAIL**

The landscape detail consists of areas that are covered by turf, trees, shrubs, and bark. This detail also includes the creek behind the chain link fence on the west side of the park. These areas are maintained by the parks landscape contractor.

### **1.1 Turf Maintenance**

The turf at this park site is irrigated with reclaimed / recycled water from EVMWD.

	Poor	Below Average	Average	Excellent
Please rate the overall appearance and maintenace.	<input type="radio"/>	<input type="radio"/>	<input type="radio"/>	<input type="radio"/>

Comments: Turf yellowing and dead in some areas and are not consistantly covered

---

### **1.2 Shrub Gardens**

The Shrub Gardens are located on the perimeter of this park site.

	Poor	Below Average	Average	Excellent
Please rate the overall appearance and maintenace.	<input type="radio"/>	<input type="radio"/>	<input type="radio"/>	<input type="radio"/>

Comments: Shrub garden appear trimmed and in good shape.

---

### **1.3 Trees**

This section pertains to the overall health and appearance of the tree on this park site.

	Poor	Below Average	Average	Excellent
Please rate the overall appearance and maintenace.	<input type="radio"/>	<input type="radio"/>	<input type="radio"/>	<input type="radio"/>

Comments: There are no leaves on the tree, hard to comment on their condition.

---

### **1.4 Creek Garden**

This area is not accessible to the public. It is sectioned off by 450 linear feet of fencing.

	Poor	Below Average	Average	Excellent
Please rate the overall appearance and maintenace.	<input type="radio"/>	<input type="radio"/>	<input type="radio"/>	<input type="radio"/>

Comments: There is chopped piles of wood and downed tree limb that appears to be a fire hazard.

---

## 2.0 STRUCTURAL DETAIL

This detail is based on the structures that are on this park location which consists of the Playground and 3-Gazebos.

### 2.1 Gazebos

There are 3-Gazebos at this location, Picnic Tables, BBQ's, and Trash Can. The Gazebo closest to the creek has 2-BBQ grills but does not contain any Picnic Tables to reduce vandalism and after hours usage.

	Poor	Below Average	Average	Excellent
Please rate the overall appearance and maintenance.	<input type="radio"/>	<input type="radio"/>	<input type="radio"/>	<input type="radio"/>

Comments: Recommend the picnic tables and Gazebos poles be sanded and repainted due to cratches and graffiti.

---

### 2.2 Playground

The playground is for the age group of 2-5 years old.

	Poor	Below Average	Average	Excellent
Please rate the overall appearance and maintenance.	<input type="radio"/>	<input type="radio"/>	<input type="radio"/>	<input type="radio"/>

Comments: Appears new.

---

### 2.3 Trash Cans

The Trash Cans are in each of the Gazebos.

	Poor	Below Average	Average	Excellent
Please rate the overall appearance and maintenance.	<input type="radio"/>	<input type="radio"/>	<input type="radio"/>	<input type="radio"/>

Comments: All are in good condition.

---

### 2.4 Fencing

This Park location is sectioned off by chain link fencing. This detail consists of 450 linear feet that separate the west side creek, and 41 linear feet at the south entry.

	Poor	Below Average	Average	Excellent
Please rate the overall appearance and maintenance.	<input type="radio"/>	<input type="radio"/>	<input type="radio"/>	<input type="radio"/>

Comments: Recommend repainting, chipping on the top.

---

### 3.0 PARK ASSETS

This category consists of park play equipment, benches, tables, and landscape features. Most of these items are serviced by the janitorial contractor.

#### 3.1 Basketball Court

This park contains 1-court with 2-hoops on a Plexi-pave surface.

	Poor	Below Average	Average	Excellent
Please rate the overall appearance and maintenance.	<input type="radio"/>	<input type="radio"/>	<input type="radio"/>	<input type="radio"/>

Comments: Recommend the courts be repainted.

#### 3.2 Light Poles

The 3-light poles on this location are 14ft tall and require a plastic base cover. The poles are found on the west side along the fence line.

	Poor	Below Average	Average	Excellent
Please rate the overall appearance and maintenance.	<input type="radio"/>	<input type="radio"/>	<input type="radio"/>	<input type="radio"/>

Comments: All appear in good condition.

#### 3.3 Picnic Tables and Benches

The Picnic Table are in the Gazebos.

The Bench are located at the North Entry, and South of Playground.

	Poor	Below Average	Average	Excellent
Please rate the overall appearance and maintenance.	<input type="radio"/>	<input type="radio"/>	<input type="radio"/>	<input type="radio"/>

Comments: Recommend the picnic tables and Gazebos poles be sanded and repainted due to cratches and graffiti.

#### 3.4 Dog Bag Dispenser

There are 2 – Dispensers in this that are located at each entrance.

	Poor	Below Average	Average	Excellent
Please rate the overall appearance and maintenance.	<input type="radio"/>	<input type="radio"/>	<input type="radio"/>	<input type="radio"/>

Comments: All were filled.



### 3.5 Rocks

Surrounding the east side (Prairie Road) of this park location. There are 38 rocks that act as décor and safety barrier.

Poor

Below Average

Average

Excellent

Please rate the overall appearance and maintenance.

☐☐☒☐

Comments: All in good condition with no graffiti.

### 3.6 Little Free Library

The little free library is located under the sycamore tree north of the playground.

Poor

Below Average

Average

Excellent

Please rate the overall appearance and maintenance.

☐☐☒☐

Comments: Appears in good condition with books in the library.

**Heritage Regency Park  
20171 Autumn Oak Place  
Wildomar, CA. 92595**

**1.0 LANDSCAPE DETAIL**

The landscape detail consists of areas that are covered by groundcover, trees, shrubs, and the swale that runs along the entire park. These areas are maintained by the parks landscape contractor.

**1.1 Groundcover Maintenance**

This pertains to the 30,248 sq. ft. of vegetation that acts as groundcover. The reasoning behind the vegetation growth is to prevent dirt from washing into the swale during rain or rain runoff.

	Poor	Below Average	Average	Excellent
Please rate the overall appearance and maintenance.	<input type="radio"/>	<input type="radio"/>	<input type="radio"/>	<input type="radio"/>

Comments: The gate was locked, I could not enter the park.

**1.2 Shrub Gardens**

The shrubs area consists of hillside that is located around the northern walls and southern wall from the Dog Park.

	Poor	Below Average	Average	Excellent
Please rate the overall appearance and maintenance.	<input type="radio"/>	<input type="radio"/>	<input type="radio"/>	<input type="radio"/>

Comments: \_\_\_\_\_

**1.3 Trees**

This pertains to the over health and appearance of the trees located on this park site.

	Poor	Below Average	Average	Excellent
Please rate the overall appearance and maintenance.	<input type="radio"/>	<input type="radio"/>	<input type="radio"/>	<input type="radio"/>

Comments: \_\_\_\_\_

**1.4 Swale**

This area pertains to the drain that runs along the 950 linear feet of park.

	Poor	Below Average	Average	Excellent
Please rate the overall appearance and maintenance.	<input type="radio"/>	<input type="radio"/>	<input type="radio"/>	<input type="radio"/>

Comments: \_\_\_\_\_

\_\_\_\_\_

## 2.0 **STRUCTURAL DETAIL**

This detail is based on the structures on this site that consist of the Playground, Gazebos and Shade Structure.

### 2.1 **Gazebos**

There are 2-Gazebos at this location; each with 3-Picnic Tables and Trash Can.

	Poor	Below Average	Average	Excellent
Please rate the overall appearance and maintenance.	<input type="radio"/>	<input type="radio"/>	<input type="radio"/>	<input type="radio"/>

Comments: \_\_\_\_\_

\_\_\_\_\_

### 2.2 **Shade Structure**

The shade structure is in the center of the park with 3-Picnic Tables.

	Poor	Below Average	Average	Excellent
Please rate the overall appearance and maintenance.	<input type="radio"/>	<input type="radio"/>	<input type="radio"/>	<input type="radio"/>

Comments: \_\_\_\_\_

\_\_\_\_\_

### 2.3 **Playground**

The Playground is labeled for the age group of 5 -12 years old.

	Poor	Below Average	Average	Excellent
Please rate the overall appearance and maintenance.	<input type="radio"/>	<input type="radio"/>	<input type="radio"/>	<input type="radio"/>

Comments: \_\_\_\_\_

\_\_\_\_\_

### 2.4 **Dog Park**

This area pertains to the 12,177sqft. of DG that is split into two separate sections:  
Large Dogs and Small Dogs.

	Poor	Below Average	Average	Excellent
Please rate the overall appearance and maintenance.	<input type="radio"/>	<input type="radio"/>	<input type="radio"/>	<input type="radio"/>

Comments: \_\_\_\_\_

\_\_\_\_\_

## 2.5 Fencing

Most of this park is enclosed by chain link fencing. The Dog Park sectionals are also enclosed by black vinyl coated fencing.

	Poor	Below Average	Average	Excellent
Please rate the overall appearance and maintenance.	<input type="radio"/>	<input type="radio"/>	<input type="radio"/>	<input type="radio"/>

Comments: \_\_\_\_\_

## 3.0 PARK ASSETS

This category consists of park assets that require maintenance or servicing.

### 3.1 Basketball Court

This park contains 2-half courts with 2-hoops on a concrete surface.

	Poor	Below Average	Average	Excellent
Please rate the overall appearance and maintenance.	<input type="radio"/>	<input type="radio"/>	<input type="radio"/>	<input type="radio"/>

Comments: \_\_\_\_\_

### 3.2 Picnic Tables and Benches

The Picnic Tables are in Gazebos, and Shade Structure

The Benches are located around the Playground, East Walkway, Large Dog Park, Small Dog Park

	Poor	Below Average	Average	Excellent
Please rate the overall appearance and maintenance.	<input type="radio"/>	<input type="radio"/>	<input type="radio"/>	<input type="radio"/>

Comments: \_\_\_\_\_

### 3.3 Trash Cans

The Trash Cans are in the Gazebos, Shade Structure, and Large Dog Park

	Poor	Below Average	Average	Excellent
Please rate the overall appearance and maintenance.	<input type="radio"/>	<input type="radio"/>	<input type="radio"/>	<input type="radio"/>

Comments: \_\_\_\_\_

### 3.4 Dog Bag Dispenser

The Dispensers are at the Autumn Oak entrance, and Small Dog Park.

	Poor	Below Average	Average	Excellent
Please rate the overall appearance and maintenace.	<input type="radio"/>	<input type="radio"/>	<input type="radio"/>	<input type="radio"/>

Comments: \_\_\_\_\_

\_\_\_\_\_

**Malaga Park**  
**32308 Mission Trail**  
**Wildomar, CA. 92595**

## **1.0 LANDSCAPE DETAIL**

The landscape detail consists of areas that are covered by groundcover, trees, shrubs, and bark. This detail also includes the DG walkway. This location is maintained by the parks landscape contractor.

### **1.1 Groundcover and Tree Maintenance**

This pertains to the Plants and Trees located throughout the park site.

	Poor	Below Average	Average	Excellent
Please rate the overall appearance and maintenance.	<input type="radio"/>	<input type="radio"/>	<input type="radio"/>	<input type="radio"/>

Comments: Plants and trees appear in good condition.

---

### **1.2 Shrub Gardens**

The shrubs area is located along south perimeter of park site.

	Poor	Below Average	Average	Excellent
Please rate the overall appearance and maintenance.	<input type="radio"/>	<input type="radio"/>	<input type="radio"/>	<input type="radio"/>

Comments: The shrubs were trimmed, recommend the bark be replaced as it is faded and not covering all areas.

---

### **1.3 DG Walkway**

The pathway crosses through the center of the park starting on Wildomar Road leading up to Mission Trail.

	Poor	Below Average	Average	Excellent
Please rate the overall appearance and maintenance.	<input type="radio"/>	<input type="radio"/>	<input type="radio"/>	<input type="radio"/>

Comments: There is rain run off in some areas that recommend refilling.

---

## **2.0 STRUCTURAL DETAIL**

This section pertains to the Shade Structures and Concrete Sign on this park site.

### **2.1 Shade Structures**

There are two standalone wooden pergolas.



	Poor	Below Average	Average	Excellent
Please rate the overall appearance and maintenance.	<input type="radio"/>	<input type="radio"/>	<input type="radio"/>	<input type="radio"/>

Comments: Appear to be in good condition.

## 2.2 Signage

This pertains to the curved concrete sign on the corner of Wildomar Road and Malaga.

	Poor	Below Average	Average	Excellent
Please rate the overall appearance and maintenance.	<input type="radio"/>	<input type="radio"/>	<input type="radio"/>	<input type="radio"/>

Comments: In great condition.

## 2.3 Fencing

This is pertaining to the wooden post and rope fencing along the Malaga Street.

	Poor	Below Average	Average	Excellent
Please rate the overall appearance and maintenance.	<input type="radio"/>	<input type="radio"/>	<input type="radio"/>	<input type="radio"/>

Comments: Appears to be in good condition.

## 3.0 PARK ASSETS

This category consists of park benches, trash containers and other features. These items are serviced by the janitorial contractor.

### 3.1 Benches and Trash Cans

The benches and trash containers are located under each wooden pergola.

	Poor	Below Average	Average	Excellent
Please rate the overall appearance and maintenance.	<input type="radio"/>	<input type="radio"/>	<input type="radio"/>	<input type="radio"/>

Comments: In great condition.

### 3.2 Little Free Library

The little free library is located next to the southern shade structure.

	Poor	Below Average	Average	Excellent
Please rate the overall appearance and maintenance.	<input type="radio"/>	<input type="radio"/>	<input type="radio"/>	<input type="radio"/>

Comments: Appears to be in good condition with books in the library.

# **ATTACHMENT C**

Measure Z Oversight Advisory Committee  
July 2021 - June 2022

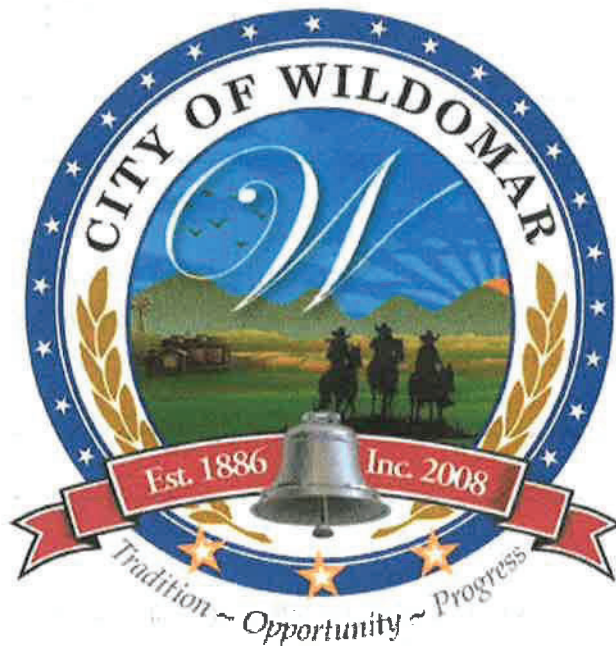
Wildomar parks annual inspections  
conducted by the presiding committee members:

**Kathleen Kovich**

City of Wildomar  
Measure Z Oversight Advisory Committee

Wildomar Parks  
Annual Inspection Guide

2021 / 2022



Nolan King, Chair

Kathleen Kovich, Vice Chair

James Howey, Committee Member

Timothy Underdown, Committee Member

Shelia Urlaub, Committee Member

*K. Kovich*

*2/22/2023*

**Marna O'Brien Park**  
**20505 Palomar Street**  
**Wildomar, CA. 92595**

**1.0 LANDSCAPE DETAIL**

The landscape detail consists of areas that are covered by turf, trees, shrubs, and bark. This detail also includes the baseball diamonds and dugouts. Majority of these locations are maintained by the parks landscape contractor.

**1.1 Turf Maintenance**

"Field" turf used by baseball, football, and soccer leagues.

"Park" turf found alongside the Gazebos and Tot lots.

	Poor	Below Average	Average	Excellent
Please rate the overall appearance and maintenance.	<input type="radio"/>	<input type="radio"/>	<input type="radio"/>	<input checked="" type="radio"/>
Comments:	<u>Bark in good shape and looks attractive. Turf is well maintained</u>			

**1.2 Shrub Gardens**

The shrub gardens are located throughout perimeter of the park and parking lot.

	Poor	Below Average	Average	Excellent
Please rate the overall appearance and maintenance.	<input type="radio"/>	<input type="radio"/>	<input type="radio"/>	<input checked="" type="radio"/>
Comments:	<u>well maintained</u>			

**1.3 Trees**

This section pertains to the overall health and appearance of the trees on this park site.

	Poor	Below Average	Average	Excellent
Please rate the overall appearance and maintenance.	<input type="radio"/>	<input type="radio"/>	<input type="radio"/>	<input checked="" type="radio"/>
Comments:	<u>well maintained</u>			

**1.4 Baseball Diamonds / Dugouts / Bleachers**

There are 3-Baseball Diamonds; each with 2-Dugout and spectator bleachers.

	Poor	Below Average	Average	Excellent
Please rate the overall appearance and maintenance.	<input type="radio"/>	<input type="radio"/>	<input type="radio"/>	<input checked="" type="radio"/>
Comments:	<u>All in good condition</u>			

## 2.0 STRUCTURAL DETAIL

The structural detail pertains to the building located in the center of the park. The building contains two restrooms, a snack bar, and picnic benches. Also included in this detail are 3-Gazebos, Playground and Water Tower.

### 2.1 Building Appearance

This pertains to the overall appearance of the building such as paint, doors, benches, stainless roll-up doors, vents, and rain gutters.

	Poor	Below Average	Average	Excellent
Please rate the overall appearance and maintenance.	<input type="radio"/>	<input type="radio"/>	<input type="radio"/>	<input checked="" type="radio"/>

Comments: Excellent condition

### 2.2 Restrooms

Men's: 2-stalls and 1- urinal with 2-sinks  
Women's: 3-stalls with 2-sinks

	Poor	Below Average	Average	Excellent
Please rate the overall appearance and maintenance.	<input type="radio"/>	<input type="radio"/>	<input type="radio"/>	<input checked="" type="radio"/>

Comments: Very clean and well maintained equipment.

### 2.3 Snack Bar Area

This area contains 2-roll up doors with counter tops and 4-Picnic Tables / Benches.

	Poor	Below Average	Average	Excellent
Please rate the overall appearance and maintenance.	<input type="radio"/>	<input type="radio"/>	<input checked="" type="radio"/>	<input type="radio"/>

Comments: Area closed.

### 2.4 Gazebos

There are 3-Gazebos at this location; each with 2-Picnic Tables w/ Benches, BBQ's, and Trash Can.

	Poor	Below Average	Average	Excellent
Please rate the overall appearance and maintenance.	<input type="radio"/>	<input type="radio"/>	<input type="radio"/>	<input checked="" type="radio"/>

Comments: Well maintained



## 2.5 Playground

The Playground is for the age group of 2-5 years old.

	Poor	Below Average	Average	Excellent
Please rate the overall appearance and maintenance.	<input type="radio"/>	<input type="radio"/>	<input type="radio"/>	<input checked="" type="radio"/>

Comments: The wheel chair swing is not accessible.

## 2.6 Water Tower

The Water Tower is in the center of the parking lot in front of the building structure.

	Poor	Below Average	Average	Excellent
Please rate the overall appearance and maintenance.	<input type="radio"/>	<input type="radio"/>	<input type="radio"/>	<input checked="" type="radio"/>

Comments: \_\_\_\_\_

## 2.7 Fencing

This consists of the vinyl fencing located along Palomar Street.

	Poor	Below Average	Average	Excellent
Please rate the overall appearance and maintenance.	<input type="radio"/>	<input type="radio"/>	<input type="radio"/>	<input checked="" type="radio"/>

Comments: \_\_\_\_\_

## 3.0 PARK ASSETS

This category consists of park play equipment, water fountains, benches and trash containers. Most of these items are serviced by the janitorial contractor.

### 3.1 Basketball Courts

This park contains 2-courts with 4-hoops on a Plexi-pave surface.

	Poor	Below Average	Average	Excellent
Please rate the overall appearance and maintenance.	<input type="radio"/>	<input type="radio"/>	<input type="radio"/>	<input checked="" type="radio"/>

Comments: Excellent shape



### 3.2 Exercise Equipment

This location has 3-exercise devices around the Park Turf area.

	Poor	Below Average	Average	Excellent
Please rate the overall appearance and maintenance.	<input type="radio"/>	<input type="radio"/>	<input checked="" type="radio"/>	<input type="radio"/>

Comments: \_\_\_\_\_

### 3.3 Parking Lot

The parking lot has two entrances from Palomar and may hold up to 149 vehicles.

	Poor	Below Average	Average	Excellent
Please rate the overall appearance and maintenance.	<input type="radio"/>	<input type="radio"/>	<input type="radio"/>	<input checked="" type="radio"/>

Comments: *Excellent condition*

### 3.4 Light Poles

The 71 light poles vary from 14 -20 feet tall with a plastic base cover. The poles are located throughout the park.

	Poor	Below Average	Average	Excellent
Please rate the overall appearance and maintenance.	<input type="radio"/>	<input type="radio"/>	<input type="radio"/>	<input checked="" type="radio"/>

Comments: *Park has good lighting*

### 3.5 Picnic Tables and Benches

The Picnic Table are in the Gazebos, Snack Bar, and Park Turf.

The Bench are located around the Basketball Court, and Playground.

	Poor	Below Average	Average	Excellent
Please rate the overall appearance and maintenance.	<input type="radio"/>	<input type="radio"/>	<input type="radio"/>	<input checked="" type="radio"/>

Comments: \_\_\_\_\_

### 3.6 Drinking Fountains

The drinking fountains are located by the Snack Bar and Basketball Courts.

	Poor	Below Average	Average	Excellent
Please rate the overall appearance and maintenance.	<input type="radio"/>	<input type="radio"/>	<input checked="" type="radio"/>	<input type="radio"/>

Comments: \_\_\_\_\_

### 3.7 Trash Cans

The Trash Cans are located at the Gazebos, Playground, Snack Bar, Basketball Court and Field Turf walkway.

	Poor	Below Average	Average	Excellent
Please rate the overall appearance and maintenance.	<input type="radio"/>	<input type="radio"/>	<input checked="" type="radio"/>	<input type="radio"/>

Comments: \_\_\_\_\_  
\_\_\_\_\_

### 3.8 Dog Bag Dispenser

There are 3 – Dispensers in this park which are located around the Field Turf walkway.

	Poor	Below Average	Average	Excellent
Please rate the overall appearance and maintenance.	<input type="radio"/>	<input type="radio"/>	<input type="radio"/>	<input checked="" type="radio"/>

Comments: Filled  
\_\_\_\_\_

### 3.9 Little Free Library

The little free library is located between the parking lot and basketball courts.

	Poor	Below Average	Average	Excellent
Please rate the overall appearance and maintenance.	<input type="radio"/>	<input checked="" type="radio"/>	<input type="radio"/>	<input type="radio"/>

Comments: Paint needed and new doors to protect the books.  
\_\_\_\_\_

**Windsong Park**  
**35459 Prairie Road**  
**Wildomar, CA. 92595**

**1.0 LANDSCAPE DETAIL**

The landscape detail consists of areas that are covered by turf, trees, shrubs, and bark. This detail also includes the creek behind the chain link fence on the west side of the park. These areas are maintained by the parks landscape contractor.

**1.1 Turf Maintenance**

The turf at this park site is irrigated with reclaimed / recycled water from EVMWD.

	Poor	Below Average	Average	Excellent
Please rate the overall appearance and maintenance.	<input type="radio"/>	<input type="radio"/>	<input type="radio"/>	<input checked="" type="radio"/>

Comments: Beautiful park.

**1.2 Shrub Gardens**

The Shrub Gardens are located on the perimeter of this park site.

	Poor	Below Average	Average	Excellent
Please rate the overall appearance and maintenance.	<input type="radio"/>	<input type="radio"/>	<input type="radio"/>	<input checked="" type="radio"/>

Comments: \_\_\_\_\_

**1.3 Trees**

This section pertains to the overall health and appearance of the tree on this park site.

	Poor	Below Average	Average	Excellent
Please rate the overall appearance and maintenance.	<input type="radio"/>	<input type="radio"/>	<input type="radio"/>	<input checked="" type="radio"/>

Comments: \_\_\_\_\_

**1.4 Creek Garden**

This area is not accessible to the public. It is sectioned off by 450 linear feet of fencing.

	Poor	Below Average	Average	Excellent
Please rate the overall appearance and maintenance.	<input type="radio"/>	<input type="radio"/>	<input checked="" type="radio"/>	<input type="radio"/>

Comments: Wetland.

## 2.0 STRUCTURAL DETAIL

This detail is based on the structures that are on this park location which consists of the Playground and 3-Gazebos.

### 2.1 Gazebos

There are 3-Gazebos at this location, Picnic Tables, BBQ's, and Trash Can. The Gazebo closest to the creek has 2-BBQ grills but does not contain any Picnic Tables to reduce vandalism and after hours usage.

	Poor	Below Average	Average	Excellent
Please rate the overall appearance and maintenance.	<input type="radio"/>	<input type="radio"/>	<input type="radio"/>	<input checked="" type="radio"/>
Comments: <u>All in great condition</u>				

### 2.2 Playground

The playground is for the age group of 2-5 years old.

	Poor	Below Average	Average	Excellent
Please rate the overall appearance and maintenance.	<input type="radio"/>	<input type="radio"/>	<input type="radio"/>	<input checked="" type="radio"/>
Comments: <u>Excellent playground area.</u>				

### 2.3 Trash Cans

The Trash Cans are in each of the Gazebos.

	Poor	Below Average	Average	Excellent
Please rate the overall appearance and maintenance.	<input type="radio"/>	<input type="radio"/>	<input type="radio"/>	<input checked="" type="radio"/>
Comments: <u>No trash at all on the grounds. Adequate trash cans must be in place.</u>				

### 2.4 Fencing

This Park location is sectioned off by chain link fencing. This detail consists of 450 linear feet that separate the west side creek, and 41 linear feet at the south entry.

	Poor	Below Average	Average	Excellent
Please rate the overall appearance and maintenance.	<input type="radio"/>	<input type="radio"/>	<input checked="" type="radio"/>	<input type="radio"/>
Comments: <u>good condition</u>				



### 3.0 PARK ASSETS

This category consists of park play equipment, benches, tables, and landscape features. Most of these items are serviced by the janitorial contractor.

#### 3.1 Basketball Court

This park contains 1-court with 2-hoops on a Plexi-pave surface.

	Poor	Below Average	Average	Excellent
Please rate the overall appearance and maintenance.	<input type="radio"/>	<input type="radio"/>	<input type="radio"/>	<input checked="" type="radio"/>

Comments: Equipment in excellent condition

#### 3.2 Light Poles

The 3-light poles on this location are 14ft tall and require a plastic base cover. The poles are found on the west side along the fence line.

	Poor	Below Average	Average	Excellent
Please rate the overall appearance and maintenance.	<input type="radio"/>	<input type="radio"/>	<input checked="" type="radio"/>	<input type="radio"/>

Comments: all covers intact

#### 3.3 Picnic Tables and Benches

The Picnic Table are in the Gazebos.

The Bench are located at the North Entry, and South of Playground.

	Poor	Below Average	Average	Excellent
Please rate the overall appearance and maintenance.	<input type="radio"/>	<input type="radio"/>	<input type="radio"/>	<input checked="" type="radio"/>

Comments: excellent condition

#### 3.4 Dog Bag Dispenser

There are 2 – Dispensers in this that are located at each entrance.

	Poor	Below Average	Average	Excellent
Please rate the overall appearance and maintenance.	<input type="radio"/>	<input type="radio"/>	<input type="radio"/>	<input checked="" type="radio"/>

Comments: Full

Good signage for rules at park entrance  
Portapotty with handwash station available.

### 3.5 Rocks

Surrounding the east side (Prairie Road) of this park location. There are 38 rocks that act as décor and safety barrier.

	Poor	Below Average	Average	Excellent
Please rate the overall appearance and maintenance.	<input type="radio"/>	<input type="radio"/>	<input type="radio"/>	<input checked="" type="radio"/>

Comments: Very attractive

### 3.6 Little Free Library

The little free library is located under the sycamore tree north of the playground.

	Poor	Below Average	Average	Excellent
Please rate the overall appearance and maintenance.	<input type="radio"/>	<input type="radio"/>	<input type="radio"/>	<input checked="" type="radio"/>

Comments: new



**Heritage Regency Park**  
**20171 Autumn Oak Place**  
**Wildomar, CA. 92595**

## 1.0 LANDSCAPE DETAIL

The landscape detail consists of areas that are covered by groundcover, trees, shrubs, and the swale that runs along the entire park. These areas are maintained by the parks landscape contractor.

### 1.1 Groundcover Maintenance

This pertains to the 30,248 sq. ft. of vegetation that acts as groundcover. The reasoning behind the vegetation growth is to prevent dirt from washing into the swale during rain or rain runoff.

	Poor	Below Average	Average	Excellent
Please rate the overall appearance and maintenance.	<input checked="" type="radio"/>	<input type="radio"/>	<input type="radio"/>	<input type="radio"/>

Comments: The ground cover is weeds.

### 1.2 Shrub Gardens

The shrubs area consists of hillside that is located around the northern walls and southern wall from the Dog Park.

	Poor	Below Average	Average	Excellent
Please rate the overall appearance and maintenance.	<input type="radio"/>	<input type="radio"/>	<input checked="" type="radio"/>	<input type="radio"/>

Comments: The hillside across from the entrance to the dog park is in poor condition.

### 1.3 Trees

This pertains to the over health and appearance of the trees located on this park site.

	Poor	Below Average	Average	Excellent
Please rate the overall appearance and maintenance.	<input type="radio"/>	<input type="radio"/>	<input checked="" type="radio"/>	<input type="radio"/>

Comments: There is a circular garden around the center tree that is in poor condition.

### 1.4 Swale

This area pertains to the drain that runs along the 950 linear feet of park.

	Poor	Below Average	Average	Excellent
Please rate the overall appearance and maintenance.	<input type="radio"/>	<input type="radio"/>	<input checked="" type="radio"/>	<input type="radio"/>

Comments: unsure if the base is mud from the rains. There was  
lots of bare spots in the middle.

## 2.0 STRUCTURAL DETAIL

This detail is based on the structures on this site that consist of the Playground, Gazebos and Shade Structure.

### 2.1 Gazebos

There are 2-Gazebos at this location; each with 3-Picnic Tables and Trash Can.

	Poor	Below Average	Average	Excellent
Please rate the overall appearance and maintenance.	<input type="radio"/>	<input type="radio"/>	<input type="radio"/>	<input checked="" type="radio"/>

Comments: \_\_\_\_\_

### 2.2 Shade Structure

The shade structure is in the center of the park with 3-Picnic Tables.

	Poor	Below Average	Average	Excellent
Please rate the overall appearance and maintenance.	<input type="radio"/>	<input type="radio"/>	<input type="radio"/>	<input checked="" type="radio"/>

Comments: \_\_\_\_\_

### 2.3 Playground

The Playground is labeled for the age group of 5 -12 years old.

	Poor	Below Average	Average	Excellent
Please rate the overall appearance and maintenance.	<input type="radio"/>	<input type="radio"/>	<input type="radio"/>	<input checked="" type="radio"/>

Comments: good condition

### 2.4 Dog Park

This area pertains to the 12,177sqft. of DG that is split into two separate sections: Large Dogs and Small Dogs.

	Poor	Below Average	Average	Excellent
Please rate the overall appearance and maintenance.	<input checked="" type="radio"/>	<input type="radio"/>	<input type="radio"/>	<input type="radio"/>

Comments: In the summer there are burrs from the weeds tracked  
into the dog area. Wood chips are most commonly used in dog parks  
and are affordable and available. Feces on the large dog  
play equipment. Looked like it had been there awhile.

## 2.5 Fencing

Most of this park is enclosed by chain link fencing. The Dog Park sectionals are also enclosed by black vinyl coated fencing.

	Poor	Below Average	Average	Excellent
Please rate the overall appearance and maintenance.	<input type="radio"/>	<input type="radio"/>	<input checked="" type="radio"/>	<input type="radio"/>

Comments: \_\_\_\_\_

## 3.0 PARK ASSETS

This category consists of park assets that require maintenance or servicing.

### 3.1 Basketball Court

This park contains 2-half courts with 2-hoops on a concrete surface.

	Poor	Below Average	Average	Excellent
Please rate the overall appearance and maintenance.	<input type="radio"/>	<input type="radio"/>	<input type="radio"/>	<input checked="" type="radio"/>

Comments: *Good condition*

### 3.2 Picnic Tables and Benches

The Picnic Tables are in Gazebos, and Shade Structure

The Benches are located around the Playground, East Walkway, Large Dog Park, Small Dog Park

	Poor	Below Average	Average	Excellent
Please rate the overall appearance and maintenance.	<input type="radio"/>	<input type="radio"/>	<input type="radio"/>	<input checked="" type="radio"/>

Comments: \_\_\_\_\_

### 3.3 Trash Cans

The Trash Cans are in the Gazebos, Shade Structure, and Large Dog Park

	Poor	Below Average	Average	Excellent
Please rate the overall appearance and maintenance.	<input type="radio"/>	<input type="radio"/>	<input type="radio"/>	<input checked="" type="radio"/>

Comments: \_\_\_\_\_

*This park needs help.*

### 3.4 Dog Bag Dispenser

The Dispensers are at the Autumn Oak entrance, and Small Dog Park.

	Poor	Below Average	Average	Excellent
Please rate the overall appearance and maintenance.	<input type="radio"/>	<input type="radio"/>	<input type="radio"/>	<input checked="" type="radio"/>

Comments: \_\_\_\_\_

\_\_\_\_\_



**Malaga Park**  
**32308 Mission Trail**  
**Wildomar, CA. 92595**

## 1.0 LANDSCAPE DETAIL

The landscape detail consists of areas that are covered by groundcover, trees, shrubs, and bark. This detail also includes the DG walkway. This location is maintained by the parks landscape contractor.

### 1.1 Groundcover and Tree Maintenance

This pertains to the Plants and Trees located throughout the park site.

	Poor	Below Average	Average	Excellent
Please rate the overall appearance and maintenance.	<input type="radio"/>	<input type="radio"/>	<input type="radio"/>	<input checked="" type="radio"/>

Comments: Very small park, attractive and well maintained

### 1.2 Shrub Gardens

The shrubs area is located along south perimeter of park site.

	Poor	Below Average	Average	Excellent
Please rate the overall appearance and maintenance.	<input type="radio"/>	<input type="radio"/>	<input type="radio"/>	<input checked="" type="radio"/>

Comments: Attractive

### 1.3 DG Walkway

The pathway crosses through the center of the park starting on Wildomar Road leading up to Mission Trail.

	Poor	Below Average	Average	Excellent
Please rate the overall appearance and maintenance.	<input type="radio"/>	<input type="radio"/>	<input checked="" type="radio"/>	<input type="radio"/>

Comments: \_\_\_\_\_

## 2.0 STRUCTURAL DETAIL

This section pertains to the Shade Structures and Concrete Sign on this park site.

### 2.1 Shade Structures

There are two standalone wooden pergolas.

	Poor	Below Average	Average	Excellent
Please rate the overall appearance and maintenance.	<input type="radio"/>	<input type="radio"/>	<input type="radio"/>	<input checked="" type="radio"/>

Comments: \_\_\_\_\_

## 2.2 Signage

This pertains to the curved concrete sign on the corner of Wildomar Road and Malaga.

	Poor	Below Average	Average	Excellent
Please rate the overall appearance and maintenance.	<input type="radio"/>	<input type="radio"/>	<input type="radio"/>	<input checked="" type="radio"/>

Comments: \_\_\_\_\_

## 2.3 Fencing

This is pertaining to the wooden post and rope fencing along the Malaga Street.

	Poor	Below Average	Average	Excellent
Please rate the overall appearance and maintenance.	<input type="radio"/>	<input type="radio"/>	<input type="radio"/>	<input checked="" type="radio"/>

Comments: \_\_\_\_\_

## 3.0 PARK ASSETS

This category consists of park benches, trash containers and other features. These items are serviced by the janitorial contractor.

### 3.1 Benches and Trash Cans

The benches and trash containers are located under each wooden pergola.

	Poor	Below Average	Average	Excellent
Please rate the overall appearance and maintenance.	<input type="radio"/>	<input type="radio"/>	<input type="radio"/>	<input checked="" type="radio"/>

Comments: \_\_\_\_\_

### 3.2 Little Free Library

The little free library is located next to the southern shade structure.

	Poor	Below Average	Average	Excellent
Please rate the overall appearance and maintenance.	<input type="radio"/>	<input type="radio"/>	<input type="radio"/>	<input checked="" type="radio"/>

Comments: \_\_\_\_\_

# **ATTACHMENT D**

Measure Z Oversight Advisory Committee  
July 2021 - June 2022

Wildomar parks annual inspections  
conducted by the presiding committee members:

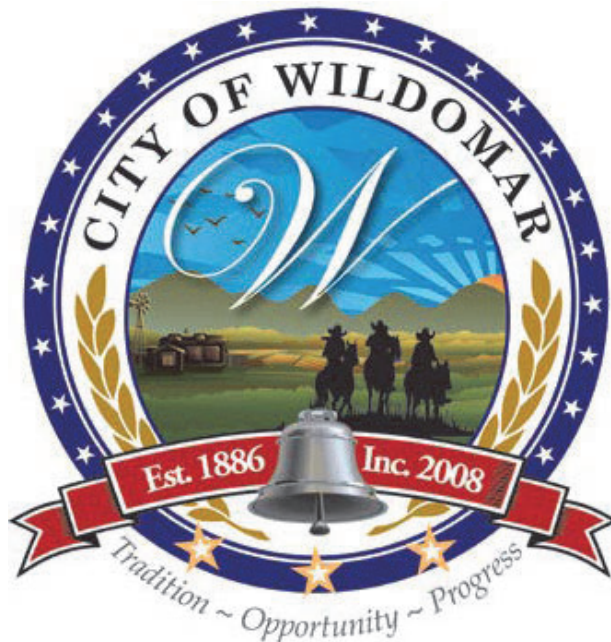
**Timothy Underdown**



City of Wildomar  
Measure Z Oversight Advisory Committee

Wildomar Parks  
Annual Inspection Guide

2021 / 2022



Nolan King, Chair  
Kathleen Kovich, Vice Chair  
James Howey, Committee Member  
Timothy Underdown, Committee Member  
Shelia Urlaub, Committee Member

**Marna O'Brien Park**  
**20505 Palomar Street**  
**Wildomar, CA. 92595**

## 1.0 LANDSCAPE DETAIL

The landscape detail consists of areas that are covered by turf, trees, shrubs, and bark. This detail also includes the baseball diamonds and dugouts. Majority of these locations are maintained by the parks landscape contractor.

### 1.1 Turf Maintenance

"Field" turf used by baseball, football, and soccer leagues.

"Park" turf found alongside the Gazebos and Tot lots.

	Poor	Below Average	Average	Excellent
Please rate the overall appearance and maintenance.	<input type="radio"/>	<input type="radio"/>	<input checked="" type="radio"/>	<input type="radio"/>

Comments: \_\_\_\_\_

### 1.2 Shrub Gardens

The shrub gardens are located throughout perimeter of the park and parking lot.

	Poor	Below Average	Average	Excellent
Please rate the overall appearance and maintenance.	<input type="radio"/>	<input type="radio"/>	<input checked="" type="radio"/>	<input type="radio"/>

Comments: \_\_\_\_\_

### 1.3 Trees

This section pertains to the overall health and appearance of the trees on this park site.

	Poor	Below Average	Average	Excellent
Please rate the overall appearance and maintenance.	<input type="radio"/>	<input type="radio"/>	<input checked="" type="radio"/>	<input type="radio"/>

Comments: \_\_\_\_\_

### 1.4 Baseball Diamonds / Dugouts / Bleachers

There are 3-Baseball Diamonds; each with 2-Dugout and spectator bleachers.

	Poor	Below Average	Average	Excellent
Please rate the overall appearance and maintenance.	<input type="radio"/>	<input type="radio"/>	<input checked="" type="radio"/>	<input type="radio"/>

Comments: \_\_\_\_\_

## 2.0 STRUCTURAL DETAIL

The structural detail pertains to the building located in the center of the park. The building contains two restrooms, a snack bar, and picnic benches. Also included in this detail are 3-Gazebos, Playground and Water Tower.

### 2.1 Building Appearance

This pertains to the overall appearance of the building such as paint, doors, benches, stainless roll-up doors, vents, and rain gutters.

	Poor	Below Average	Average	Excellent
Please rate the overall appearance and maintenance.	<input type="radio"/>	<input type="radio"/>	<input checked="" type="radio"/>	<input type="radio"/>

Comments: \_\_\_\_\_

### 2.2 Restrooms

Men's: 2-stalls and 1- urinal with 2-sinks

Women's: 3-stalls with 2-sinks

	Poor	Below Average	Average	Excellent
Please rate the overall appearance and maintenance.	<input type="radio"/>	<input type="radio"/>	<input type="radio"/>	<input checked="" type="radio"/>

Comments: \_\_\_\_\_

### 2.3 Snack Bar Area

This area contains 2-roll up doors with counter tops and 4-Picnic Tables / Benches.

	Poor	Below Average	Average	Excellent
Please rate the overall appearance and maintenance.	<input type="radio"/>	<input type="radio"/>	<input checked="" type="radio"/>	<input type="radio"/>

Comments: \_\_\_\_\_

### 2.4 Gazebos

There are 3-Gazebos at this location; each with 2-Picnic Tables w/ Benches, BBQ's, and Trash Can.

	Poor	Below Average	Average	Excellent
Please rate the overall appearance and maintenance.	<input type="radio"/>	<input type="radio"/>	<input checked="" type="radio"/>	<input type="radio"/>

Comments: \_\_\_\_\_

## 2.5 Playground

The Playground is for the age group of 2-5 years old.

	Poor	Below Average	Average	Excellent
Please rate the overall appearance and maintenance.	<input type="radio"/>	<input type="radio"/>	<input checked="" type="radio"/>	<input type="radio"/>

Comments: \_\_\_\_\_  
\_\_\_\_\_

## 2.6 Water Tower

The Water Tower is in the center of the parking lot in front of the building structure.

	Poor	Below Average	Average	Excellent
Please rate the overall appearance and maintenance.	<input type="radio"/>	<input type="radio"/>	<input type="radio"/>	<input checked="" type="radio"/>

Comments: \_\_\_\_\_  
\_\_\_\_\_

## 2.7 Fencing

This consists of the vinyl fencing located along Palomar Street.

	Poor	Below Average	Average	Excellent
Please rate the overall appearance and maintenance.	<input type="radio"/>	<input type="radio"/>	<input checked="" type="radio"/>	<input type="radio"/>

Comments: \_\_\_\_\_  
\_\_\_\_\_

## 3.0 PARK ASSETS

This category consists of park play equipment, water fountains, benches and trash containers. Most of these items are serviced by the janitorial contractor.

### 3.1 Basketball Courts

This park contains 2-courts with 4-hoops on a Plexi-pave surface.

	Poor	Below Average	Average	Excellent
Please rate the overall appearance and maintenance.	<input type="radio"/>	<input type="radio"/>	<input checked="" type="radio"/>	<input type="radio"/>

Comments: \_\_\_\_\_  
\_\_\_\_\_

### 3.2 Exercise Equipment

This location has 3-exercise devices around the Park Turf area.

	Poor	Below Average	Average	Excellent
Please rate the overall appearance and maintenance.	<input type="radio"/>	<input type="radio"/>	<input checked="" type="radio"/>	<input type="radio"/>

Comments: \_\_\_\_\_  
\_\_\_\_\_

### 3.3 Parking Lot

The parking lot has two entrances from Palomar and may hold up to 149 vehicles.

	Poor	Below Average	Average	Excellent
Please rate the overall appearance and maintenance.	<input type="radio"/>	<input type="radio"/>	<input checked="" type="radio"/>	<input type="radio"/>

Comments: \_\_\_\_\_  
\_\_\_\_\_

### 3.4 Light Poles

The 71 light poles vary from 14 -20 feet tall with a plastic base cover. The poles are located throughout the park.

	Poor	Below Average	Average	Excellent
Please rate the overall appearance and maintenance.	<input type="radio"/>	<input type="radio"/>	<input checked="" type="radio"/>	<input type="radio"/>

Comments: \_\_\_\_\_  
\_\_\_\_\_

### 3.5 Picnic Tables and Benches

The Picnic Table are in the Gazebos, Snack Bar, and Park Turf.

The Bench are located around the Basketball Court, and Playground.

	Poor	Below Average	Average	Excellent
Please rate the overall appearance and maintenance.	<input type="radio"/>	<input type="radio"/>	<input checked="" type="radio"/>	<input type="radio"/>

Comments: \_\_\_\_\_  
\_\_\_\_\_

### 3.6 Drinking Fountains

The drinking fountains are located by the Snack Bar and Basketball Courts.

	Poor	Below Average	Average	Excellent
Please rate the overall appearance and maintenance.	<input type="radio"/>	<input checked="" type="radio"/>	<input type="radio"/>	<input type="radio"/>

Comments: Was not working when I went by.  
\_\_\_\_\_  
\_\_\_\_\_

### 3.7 Trash Cans

The Trash Cans are located at the Gazebos, Playground, Snack Bar, Basketball Court and Field Turf walkway.

	Poor	Below Average	Average	Excellent
Please rate the overall appearance and maintenance.	<input type="radio"/>	<input type="radio"/>	<input checked="" type="radio"/>	<input type="radio"/>

Comments: \_\_\_\_\_  
\_\_\_\_\_

### 3.8 Dog Bag Dispenser

There are 3 – Dispensers in this park which are located around the Field Turf walkway.

	Poor	Below Average	Average	Excellent
Please rate the overall appearance and maintenance.	<input type="radio"/>	<input type="radio"/>	<input checked="" type="radio"/>	<input type="radio"/>

Comments: \_\_\_\_\_  
\_\_\_\_\_

### 3.9 Little Free Library

The little free library is located between the parking lot and basketball courts.

	Poor	Below Average	Average	Excellent
Please rate the overall appearance and maintenance.	<input type="radio"/>	<input type="radio"/>	<input checked="" type="radio"/>	<input type="radio"/>

Comments: \_\_\_\_\_  
\_\_\_\_\_

**Windsong Park**  
**35459 Prairie Road**  
**Wildomar, CA. 92595**

**1.0 LANDSCAPE DETAIL**

The landscape detail consists of areas that are covered by turf, trees, shrubs, and bark. This detail also includes the creek behind the chain link fence on the west side of the park. These areas are maintained by the parks landscape contractor.

**1.1 Turf Maintenance**

The turf at this park site is irrigated with reclaimed / recycled water from EVMWD.

	Poor	Below Average	Average	Excellent
Please rate the overall appearance and maintenace.	<input type="radio"/>	<input type="radio"/>	<input checked="" type="radio"/>	<input type="radio"/>

Comments: \_\_\_\_\_  
\_\_\_\_\_

**1.2 Shrub Gardens**

The Shrub Gardens are located on the perimeter of this park site.

	Poor	Below Average	Average	Excellent
Please rate the overall appearance and maintenace.	<input type="radio"/>	<input type="radio"/>	<input checked="" type="radio"/>	<input type="radio"/>

Comments: \_\_\_\_\_  
\_\_\_\_\_

**1.3 Trees**

This section pertains to the overall health and appearance of the tree on this park site.

	Poor	Below Average	Average	Excellent
Please rate the overall appearance and maintenace.	<input type="radio"/>	<input type="radio"/>	<input checked="" type="radio"/>	<input type="radio"/>

Comments: \_\_\_\_\_  
\_\_\_\_\_

**1.4 Creek Garden**

This area is not accessible to the public. It is sectioned off by 450 linear feet of fencing.

	Poor	Below Average	Average	Excellent
Please rate the overall appearance and maintenace.	<input type="radio"/>	<input type="radio"/>	<input checked="" type="radio"/>	<input type="radio"/>

Comments: \_\_\_\_\_  
\_\_\_\_\_



## 2.0 **STRUCTURAL DETAIL**

This detail is based on the structures that are on this park location which consists of the Playground and 3-Gazebos.

### 2.1 **Gazebos**

There are 3-Gazebos at this location, Picnic Tables, BBQ's, and Trash Can. The Gazebo closest to the creek has 2-BBQ grills but does not contain any Picnic Tables to reduce vandalism and after hours usage.

	Poor	Below Average	Average	Excellent
Please rate the overall appearance and maintenance.	<input type="radio"/>	<input type="radio"/>	<input checked="" type="radio"/>	<input type="radio"/>

Comments: \_\_\_\_\_  
\_\_\_\_\_

### 2.2 **Playground**

The playground is for the age group of 2-5 years old.

	Poor	Below Average	Average	Excellent
Please rate the overall appearance and maintenance.	<input type="radio"/>	<input type="radio"/>	<input checked="" type="radio"/>	<input type="radio"/>

Comments: \_\_\_\_\_  
\_\_\_\_\_

### 2.3 **Trash Cans**

The Trash Cans are in each of the Gazebos.

	Poor	Below Average	Average	Excellent
Please rate the overall appearance and maintenance.	<input type="radio"/>	<input type="radio"/>	<input checked="" type="radio"/>	<input type="radio"/>

Comments: \_\_\_\_\_  
\_\_\_\_\_

### 2.4 **Fencing**

This Park location is sectioned off by chain link fencing. This detail consists of 450 linear feet that separate the west side creek, and 41 linear feet at the south entry.

	Poor	Below Average	Average	Excellent
Please rate the overall appearance and maintenance.	<input type="radio"/>	<input type="radio"/>	<input checked="" type="radio"/>	<input type="radio"/>

Comments: \_\_\_\_\_  
\_\_\_\_\_

### 3.0 **PARK ASSETS**

This category consists of park play equipment, benches, tables, and landscape features. Most of these items are serviced by the janitorial contractor.

#### 3.1 **Basketball Court**

This park contains 1-court with 2-hoops on a Plexi-pave surface.

	Poor	Below Average	Average	Excellent
Please rate the overall appearance and maintenance.	<input type="radio"/>	<input type="radio"/>	<input checked="" type="radio"/>	<input type="radio"/>

Comments: \_\_\_\_\_

#### 3.2 **Light Poles**

The 3-light poles on this location are 14ft tall and require a plastic base cover. The poles are found on the west side along the fence line.

	Poor	Below Average	Average	Excellent
Please rate the overall appearance and maintenance.	<input type="radio"/>	<input type="radio"/>	<input checked="" type="radio"/>	<input type="radio"/>

Comments: \_\_\_\_\_

#### 3.3 **Picnic Tables and Benches**

The Picnic Table are in the Gazebos.

The Bench are located at the North Entry, and South of Playground.

	Poor	Below Average	Average	Excellent
Please rate the overall appearance and maintenance.	<input type="radio"/>	<input type="radio"/>	<input checked="" type="radio"/>	<input type="radio"/>

Comments: \_\_\_\_\_

#### 3.4 **Dog Bag Dispenser**

There are 2 – Dispensers in this that are located at each entrance.

	Poor	Below Average	Average	Excellent
Please rate the overall appearance and maintenance.	<input type="radio"/>	<input type="radio"/>	<input checked="" type="radio"/>	<input type="radio"/>

Comments: \_\_\_\_\_

**3.5     Rocks**

Surrounding the east side (Prairie Road) of this park location. There are 38 rocks that act as décor and safety barrier.

	Poor	Below Average	Average	Excellent
Please rate the overall appearance and maintenance.	<input type="radio"/>	<input type="radio"/>	<input checked="" type="radio"/>	<input type="radio"/>

Comments: \_\_\_\_\_  
\_\_\_\_\_

**3.6     Little Free Library**

The little free library is located under the sycamore tree north of the playground.

	Poor	Below Average	Average	Excellent
Please rate the overall appearance and maintenance.	<input type="radio"/>	<input type="radio"/>	<input checked="" type="radio"/>	<input type="radio"/>

Comments: \_\_\_\_\_  
\_\_\_\_\_

**Heritage Regency Park  
20171 Autumn Oak Place  
Wildomar, CA. 92595**

**1.0 LANDSCAPE DETAIL**

The landscape detail consists of areas that are covered by groundcover, trees, shrubs, and the swale that runs along the entire park. These areas are maintained by the parks landscape contractor.

**1.1 Groundcover Maintenance**

This pertains to the 30,248 sq. ft. of vegetation that acts as groundcover. The reasoning behind the vegetation growth is to prevent dirt from washing into the swale during rain or rain runoff.

	Poor	Below Average	Average	Excellent
Please rate the overall appearance and maintenance.	<input type="radio"/>	<input type="radio"/>	<input checked="" type="radio"/>	<input type="radio"/>

Comments: \_\_\_\_\_

**1.2 Shrub Gardens**

The shrubs area consists of hillside that is located around the northern walls and southern wall from the Dog Park.

	Poor	Below Average	Average	Excellent
Please rate the overall appearance and maintenance.	<input type="radio"/>	<input type="radio"/>	<input checked="" type="radio"/>	<input type="radio"/>

Comments: \_\_\_\_\_

**1.3 Trees**

This pertains to the over health and appearance of the trees located on this park site.

	Poor	Below Average	Average	Excellent
Please rate the overall appearance and maintenance.	<input type="radio"/>	<input type="radio"/>	<input checked="" type="radio"/>	<input type="radio"/>

Comments: \_\_\_\_\_

**1.4 Swale**

This area pertains to the drain that runs along the 950 linear feet of park.

	Poor	Below Average	Average	Excellent
Please rate the overall appearance and maintenance.	<input type="radio"/>	<input checked="" type="radio"/>	<input type="radio"/>	<input type="radio"/>

Comments: All the rain we have had is the reason it looks below average.

## 2.0 **STRUCTURAL DETAIL**

This detail is based on the structures on this site that consist of the Playground, Gazebos and Shade Structure.

### 2.1 **Gazebos**

There are 2-Gazebos at this location; each with 3-Picnic Tables and Trash Can.

	Poor	Below Average	Average	Excellent
Please rate the overall appearance and maintenance.	<input type="radio"/>	<input type="radio"/>	<input type="radio"/>	<input checked="" type="radio"/>

Comments: Looked like some work has recently been done.

### 2.2 **Shade Structure**

The shade structure is in the center of the park with 3-Picnic Tables.

	Poor	Below Average	Average	Excellent
Please rate the overall appearance and maintenance.	<input type="radio"/>	<input type="radio"/>	<input checked="" type="radio"/>	<input type="radio"/>

Comments:

### 2.3 **Playground**

The Playground is labeled for the age group of 5 -12 years old.

	Poor	Below Average	Average	Excellent
Please rate the overall appearance and maintenance.	<input type="radio"/>	<input type="radio"/>	<input checked="" type="radio"/>	<input type="radio"/>

Comments:

### 2.4 **Dog Park**

This area pertains to the 12,177sqft. of DG that is split into two separate sections:  
Large Dogs and Small Dogs.

	Poor	Below Average	Average	Excellent
Please rate the overall appearance and maintenance.	<input type="radio"/>	<input type="radio"/>	<input checked="" type="radio"/>	<input type="radio"/>

Comments:

## 2.5 Fencing

Most of this park is enclosed by chain link fencing. The Dog Park sectionals are also enclosed by black vinyl coated fencing.

	Poor	Below Average	Average	Excellent
Please rate the overall appearance and maintenance.	<input type="radio"/>	<input type="radio"/>	<input checked="" type="radio"/>	<input type="radio"/>

Comments: \_\_\_\_\_

## 3.0 PARK ASSETS

This category consists of park assets that require maintenance or servicing.

### 3.1 Basketball Court

This park contains 2-half courts with 2-hoops on a concrete surface.

	Poor	Below Average	Average	Excellent
Please rate the overall appearance and maintenance.	<input type="radio"/>	<input type="radio"/>	<input checked="" type="radio"/>	<input type="radio"/>

Comments: \_\_\_\_\_

### 3.2 Picnic Tables and Benches

The Picnic Tables are in Gazebos, and Shade Structure

The Benches are located around the Playground, East Walkway, Large Dog Park, Small Dog Park

	Poor	Below Average	Average	Excellent
Please rate the overall appearance and maintenance.	<input type="radio"/>	<input type="radio"/>	<input checked="" type="radio"/>	<input type="radio"/>

Comments: \_\_\_\_\_

### 3.3 Trash Cans

The Trash Cans are in the Gazebos, Shade Structure, and Large Dog Park

	Poor	Below Average	Average	Excellent
Please rate the overall appearance and maintenance.	<input type="radio"/>	<input type="radio"/>	<input checked="" type="radio"/>	<input type="radio"/>

Comments: \_\_\_\_\_



**3.4 Dog Bag Dispenser**

The Dispensers are at the Autumn Oak entrance, and Small Dog Park.

	Poor	Below Average	Average	Excellent
Please rate the overall appearance and maintenance.	<input type="radio"/>	<input type="radio"/>	<input checked="" type="radio"/>	<input type="radio"/>

Comments: \_\_\_\_\_

\_\_\_\_\_

**Malaga Park**  
**32308 Mission Trail**  
**Wildomar, CA. 92595**

## 1.0 LANDSCAPE DETAIL

The landscape detail consists of areas that are covered by groundcover, trees, shrubs, and bark. This detail also includes the DG walkway. This location is maintained by the parks landscape contractor.

### 1.1 Groundcover and Tree Maintenance

This pertains to the Plants and Trees located throughout the park site.

	Poor	Below Average	Average	Excellent
Please rate the overall appearance and maintenace.	<input type="radio"/>	<input type="radio"/>	<input checked="" type="radio"/>	<input type="radio"/>

Comments: \_\_\_\_\_  
\_\_\_\_\_

### 1.2 Shrub Gardens

The shrubs area is located along south perimeter of park site.

	Poor	Below Average	Average	Excellent
Please rate the overall appearance and maintenace.	<input type="radio"/>	<input type="radio"/>	<input checked="" type="radio"/>	<input type="radio"/>

Comments: \_\_\_\_\_  
\_\_\_\_\_

### 1.3 DG Walkway

The pathway crosses through the center of the park starting on Wildomar Road leading up to Mission Trail.

	Poor	Below Average	Average	Excellent
Please rate the overall appearance and maintenace.	<input type="radio"/>	<input type="radio"/>	<input checked="" type="radio"/>	<input type="radio"/>

Comments: \_\_\_\_\_  
\_\_\_\_\_

## 2.0 STRUCTURAL DETAIL

This section pertains to the Shade Structures and Concrete Sign on this park site.

### 2.1 Shade Structures

There are two standalone wooden pergolas.

	Poor	Below Average	Average	Excellent
Please rate the overall appearance and maintenance.	<input type="radio"/>	<input type="radio"/>	<input checked="" type="radio"/>	<input type="radio"/>

Comments: \_\_\_\_\_

## 2.2 Signage

This pertains to the curved concrete sign on the corner of Wildomar Road and Malaga.

	Poor	Below Average	Average	Excellent
Please rate the overall appearance and maintenance.	<input type="radio"/>	<input type="radio"/>	<input checked="" type="radio"/>	<input type="radio"/>

Comments: \_\_\_\_\_

## 2.3 Fencing

This is pertaining to the wooden post and rope fencing along the Malaga Street.

	Poor	Below Average	Average	Excellent
Please rate the overall appearance and maintenance.	<input type="radio"/>	<input type="radio"/>	<input checked="" type="radio"/>	<input type="radio"/>

Comments: \_\_\_\_\_

## 3.0 PARK ASSETS

This category consists of park benches, trash containers and other features. These items are serviced by the janitorial contractor.

### 3.1 Benches and Trash Cans

The benches and trash containers are located under each wooden pergola.

	Poor	Below Average	Average	Excellent
Please rate the overall appearance and maintenance.	<input type="radio"/>	<input type="radio"/>	<input checked="" type="radio"/>	<input type="radio"/>

Comments: \_\_\_\_\_

### 3.2 Little Free Library

The little free library is located next to the southern shade structure.

	Poor	Below Average	Average	Excellent
Please rate the overall appearance and maintenance.	<input type="radio"/>	<input type="radio"/>	<input checked="" type="radio"/>	<input type="radio"/>

Comments: \_\_\_\_\_

# **ATTACHMENT E**

Measure Z Oversight Advisory Committee  
July 2021 - June 2022

Wildomar parks annual inspections  
conducted by the presiding committee members:

**Shelia Urlaub**

Marna O'Brien Park  
20505 Palomar Street  
Wildomar, CA. 92595

*Sheila Wolanb*

## 1.0 LANDSCAPE DETAIL

The landscape detail consists of areas that are covered by turf, trees, shrubs, and bark. This detail also includes the baseball diamonds and dugouts. Majority of these locations are maintained by the parks landscape contractor.

### 1.1 Turf Maintenance

"Field" turf used by baseball, football, and soccer leagues.

"Park" turf found alongside the Gazebos and Tot lots.

	Poor	Below Average	Average	Excellent
Please rate the overall appearance and maintenance.	<input type="radio"/>	<input type="radio"/>	<input checked="" type="radio"/>	<input type="radio"/>

Comments: *A little weedy*

### 1.2 Shrub Gardens

The shrub gardens are located throughout perimeter of the park and parking lot.

	Poor	Below Average	Average	Excellent
Please rate the overall appearance and maintenance.	<input type="radio"/>	<input type="radio"/>	<input checked="" type="radio"/>	<input type="radio"/>

Comments: *Gassy area by fence overgrown, assume due to rainy season*

### 1.3 Trees

This section pertains to the overall health and appearance of the trees on this park site.

	Poor	Below Average	Average	Excellent
Please rate the overall appearance and maintenance.	<input type="radio"/>	<input type="radio"/>	<input checked="" type="radio"/>	<input type="radio"/>

Comments: \_\_\_\_\_

### 1.4 Baseball Diamonds / Dugouts / Bleachers

There are 3-Baseball Diamonds; each with 2-Dugout and spectator bleachers.

	Poor	Below Average	Average	Excellent
Please rate the overall appearance and maintenance.	<input type="radio"/>	<input type="radio"/>	<input checked="" type="radio"/>	<input type="radio"/>

Comments: *Flooded a bit (rain)*

## 2.0 STRUCTURAL DETAIL

The structural detail pertains to the building located in the center of the park. The building contains two restrooms, a snack bar, and picnic benches. Also included in this detail are 3-Gazebos, Playground and Water Tower.

### 2.1 Building Appearance

This pertains to the overall appearance of the building such as paint, doors, benches, stainless roll-up doors, vents, and rain gutters.

	Poor	Below Average	Average	Excellent
Please rate the overall appearance and maintenance.	<input type="radio"/>	<input type="radio"/>	<input type="radio"/>	<input checked="" type="radio"/>

Comments: \_\_\_\_\_

### 2.2 Restrooms

Men's: 2-stalls and 1- urinal with 2-sinks

Women's: 3-stalls with 2-sinks

	Poor	Below Average	Average	Excellent
Please rate the overall appearance and maintenance.	<input type="radio"/>	<input type="radio"/>	<input type="radio"/>	<input checked="" type="radio"/>

Comments: \_\_\_\_\_

### 2.3 Snack Bar Area

This area contains 2-roll up doors with counter tops and 4-Picnic Tables / Benches.

	Poor	Below Average	Average	Excellent
Please rate the overall appearance and maintenance.	<input type="radio"/>	<input type="radio"/>	<input type="radio"/>	<input checked="" type="radio"/>

Comments: \_\_\_\_\_

### 2.4 Gazebos

There are 3-Gazebos at this location; each with 2-Picnic Tables w/ Benches, BBQ's, and Trash Can.

	Poor	Below Average	Average	Excellent
Please rate the overall appearance and maintenance.	<input type="radio"/>	<input type="radio"/>	<input checked="" type="radio"/>	<input type="radio"/>

Comments: \_\_\_\_\_



## 2.5 Playground

The Playground is for the age group of 2-5 years old.

	Poor	Below Average	Average	Excellent
Please rate the overall appearance and maintenance.	<input type="radio"/>	<input type="radio"/>	<input checked="" type="radio"/>	<input type="radio"/>

Comments: \_\_\_\_\_  
\_\_\_\_\_

## 2.6 Water Tower

The Water Tower is in the center of the parking lot in front of the building structure.

	Poor	Below Average	Average	Excellent
Please rate the overall appearance and maintenance.	<input type="radio"/>	<input type="radio"/>	<input type="radio"/>	<input checked="" type="radio"/>

Comments: \_\_\_\_\_  
\_\_\_\_\_

## 2.7 Fencing

This consists of the vinyl fencing located along Palomar Street.

	Poor	Below Average	Average	Excellent
Please rate the overall appearance and maintenance.	<input type="radio"/>	<input type="radio"/>	<input type="radio"/>	<input checked="" type="radio"/>

Comments: \_\_\_\_\_  
\_\_\_\_\_

## 3.0 PARK ASSETS

This category consists of park play equipment, water fountains, benches and trash containers. Most of these items are serviced by the janitorial contractor.

### 3.1 Basketball Courts

This park contains 2-courts with 4-hoops on a Plexi-pave surface.

	Poor	Below Average	Average	Excellent
Please rate the overall appearance and maintenance.	<input type="radio"/>	<input type="radio"/>	<input type="radio"/>	<input checked="" type="radio"/>

Comments: \_\_\_\_\_  
\_\_\_\_\_

### 3.2 Exercise Equipment

This location has 3-exercise devices around the Park Turf area.

	Poor	Below Average	Average	Excellent
Please rate the overall appearance and maintenance.	<input type="radio"/>	<input type="radio"/>	<input checked="" type="radio"/>	<input type="radio"/>

Comments: 5 devices, 2 areas

### 3.3 Parking Lot

The parking lot has two entrances from Palomar and may hold up to 149 vehicles.

	Poor	Below Average	Average	Excellent
Please rate the overall appearance and maintenance.	<input type="radio"/>	<input type="radio"/>	<input checked="" type="radio"/>	<input type="radio"/>

Comments: \_\_\_\_\_

### 3.4 Light Poles

The 71 light poles vary from 14 -20 feet tall with a plastic base cover. The poles are located throughout the park.

	Poor	Below Average	Average	Excellent
Please rate the overall appearance and maintenance.	<input type="radio"/>	<input type="radio"/>	<input checked="" type="radio"/>	<input type="radio"/>

Comments: Netting along south end of park (by baseball field)  
has gaps + showing its age. Free flying at the bottom for most of it.

### 3.5 Picnic Tables and Benches

The Picnic Table are in the Gazebos, Snack Bar, and Park Turf.

The Bench are located around the Basketball Court, and Playground.

	Poor	Below Average	Average	Excellent
Please rate the overall appearance and maintenance.	<input type="radio"/>	<input type="radio"/>	<input checked="" type="radio"/>	<input type="radio"/>

Comments: \_\_\_\_\_

### 3.6 Drinking Fountains

The drinking fountains are located by the Snack Bar and Basketball Courts.

	Poor	Below Average	Average	Excellent
Please rate the overall appearance and maintenance.	<input type="radio"/>	<input type="radio"/>	<input checked="" type="radio"/>	<input type="radio"/>

Comments: The drains in some are rusted

### 3.7 Trash Cans

The Trash Cans are located at the Gazebos, Playground, Snack Bar, Basketball Court and Field Turf walkway.

	Poor	Below Average	Average	Excellent
Please rate the overall appearance and maintenance.	<input type="radio"/>	<input type="radio"/>	<input checked="" type="radio"/>	<input type="radio"/>

Comments: \_\_\_\_\_

### 3.8 Dog Bag Dispenser

There are 3 – Dispensers in this park which are located around the Field Turf walkway.

	Poor	Below Average	Average	Excellent
Please rate the overall appearance and maintenance.	<input type="radio"/>	<input type="radio"/>	<input checked="" type="radio"/>	<input type="radio"/>

Comments: \_\_\_\_\_

### 3.9 Little Free Library

The little free library is located between the parking lot and basketball courts.

	Poor	Below Average	Average	Excellent
Please rate the overall appearance and maintenance.	<input type="radio"/>	<input type="radio"/>	<input checked="" type="radio"/>	<input type="radio"/>

Comments: Starting to show signs of wear & tear

Any idea what is going on with the handi-cop swing?

Windsong Park  
35459 Prairie Road  
Wildomar, CA. 92595

*Sheila W. Lamb*

## 1.0 LANDSCAPE DETAIL

The landscape detail consists of areas that are covered by turf, trees, shrubs, and bark. This detail also includes the creek behind the chain link fence on the west side of the park. These areas are maintained by the parks landscape contractor.

### 1.1 Turf Maintenance

The turf at this park site is irrigated with reclaimed / recycled water from EVMWD.

	Poor	Below Average	Average	Excellent
Please rate the overall appearance and maintenance.	<input type="radio"/>	<input type="radio"/>	<input checked="" type="radio"/>	<input type="radio"/>

Comments: \_\_\_\_\_

### 1.2 Shrub Gardens

The Shrub Gardens are located on the perimeter of this park site.

	Poor	Below Average	Average	Excellent
Please rate the overall appearance and maintenance.	<input type="radio"/>	<input type="radio"/>	<input checked="" type="radio"/>	<input type="radio"/>

Comments: \_\_\_\_\_

### 1.3 Trees

This section pertains to the overall health and appearance of the tree on this park site.

	Poor	Below Average	Average	Excellent
Please rate the overall appearance and maintenance.	<input type="radio"/>	<input type="radio"/>	<input checked="" type="radio"/>	<input type="radio"/>

Comments: \_\_\_\_\_

### 1.4 Creek Garden

This area is not accessible to the public. It is sectioned off by 450 linear feet of fencing.

	Poor	Below Average	Average	Excellent
Please rate the overall appearance and maintenance.	<input type="radio"/>	<input type="radio"/>	<input type="radio"/>	<input checked="" type="radio"/>

Comments: \_\_\_\_\_

## 2.0 STRUCTURAL DETAIL

This detail is based on the structures that are on this park location which consists of the Playground and 3-Gazebos.

### 2.1 Gazebos

There are 3-Gazebos at this location, Picnic Tables, BBQ's, and Trash Can. The Gazebo closest to the creek has 2-BBQ grills but does not contain any Picnic Tables to reduce vandalism and after hours usage.

	Poor	Below Average	Average	Excellent
Please rate the overall appearance and maintenance.	<input type="radio"/>	<input type="radio"/>	<input type="radio"/>	<input checked="" type="radio"/>

Comments: \_\_\_\_\_

### 2.2 Playground

The playground is for the age group of 2-5 years old.

	Poor	Below Average	Average	Excellent
Please rate the overall appearance and maintenance.	<input type="radio"/>	<input checked="" type="radio"/>	<input type="radio"/>	<input type="radio"/>

Comments: *Appears to be a hangout for Teens to smoke weed*

### 2.3 Trash Cans

The Trash Cans are in each of the Gazebos.

	Poor	Below Average	Average	Excellent
Please rate the overall appearance and maintenance.	<input type="radio"/>	<input type="radio"/>	<input checked="" type="radio"/>	<input type="radio"/>

Comments: \_\_\_\_\_

### 2.4 Fencing

This Park location is sectioned off by chain link fencing. This detail consists of 450 linear feet that separate the west side creek, and 41 linear feet at the south entry.

	Poor	Below Average	Average	Excellent
Please rate the overall appearance and maintenance.	<input type="radio"/>	<input type="radio"/>	<input type="radio"/>	<input checked="" type="radio"/>

Comments: \_\_\_\_\_

### 3.0 PARK ASSETS

This category consists of park play equipment, benches, tables, and landscape features. Most of these items are serviced by the janitorial contractor.

#### 3.1 Basketball Court

This park contains 1-court with 2-hoops on a Plexi-pave surface.

	Poor	Below Average	Average	Excellent
Please rate the overall appearance and maintenance.	<input type="radio"/>	<input type="radio"/>	<input checked="" type="radio"/>	<input type="radio"/>

Comments: \_\_\_\_\_

#### 3.2 Light Poles

The 3-light poles on this location are 14ft tall and require a plastic base cover. The poles are found on the west side along the fence line.

	Poor	Below Average	Average	Excellent
Please rate the overall appearance and maintenance.	<input type="radio"/>	<input type="radio"/>	<input checked="" type="radio"/>	<input type="radio"/>

Comments: \_\_\_\_\_

#### 3.3 Picnic Tables and Benches

The Picnic Table are in the Gazebos.

The Bench are located at the North Entry, and South of Playground.

	Poor	Below Average	Average	Excellent
Please rate the overall appearance and maintenance.	<input type="radio"/>	<input type="radio"/>	<input checked="" type="radio"/>	<input type="radio"/>

Comments: \_\_\_\_\_

#### 3.4 Dog Bag Dispenser

There are 2 – Dispensers in this that are located at each entrance.

	Poor	Below Average	Average	Excellent
Please rate the overall appearance and maintenance.	<input type="radio"/>	<input type="radio"/>	<input checked="" type="radio"/>	<input type="radio"/>

Comments: \_\_\_\_\_



### 3.5 Rocks

Surrounding the east side (Prairie Road) of this park location. There are 38 rocks that act as décor and safety barrier.

	Poor	Below Average	Average	Excellent
Please rate the overall appearance and maintenance.	<input type="radio"/>	<input type="radio"/>	<input type="radio"/>	<input checked="" type="radio"/>

Comments: \_\_\_\_\_

### 3.6 Little Free Library

The little free library is located under the sycamore tree north of the playground.

	Poor	Below Average	Average	Excellent
Please rate the overall appearance and maintenance.	<input type="radio"/>	<input type="radio"/>	<input type="radio"/>	<input checked="" type="radio"/>

Comments: \_\_\_\_\_

*Sheila Urbani*

**Heritage Regency Park  
20171 Autumn Oak Place  
Wildomar, CA. 92595**

## 1.0 LANDSCAPE DETAIL

The landscape detail consists of areas that are covered by groundcover, trees, shrubs, and the swale that runs along the entire park. These areas are maintained by the parks landscape contractor.

### 1.1 Groundcover Maintenance

This pertains to the 30,248 sq. ft. of vegetation that acts as groundcover. The reasoning behind the vegetation growth is to prevent dirt from washing into the swale during rain or rain runoff.

	Poor	Below Average	Average	Excellent
Please rate the overall appearance and maintenance.	<input type="radio"/>	<input type="radio"/>	<input type="radio"/>	<input type="radio"/>

Comments: \_\_\_\_\_

### 1.2 Shrub Gardens

The shrubs area consists of hillside that is located around the northern walls and southern wall from the Dog Park.

	Poor	Below Average	Average	Excellent
Please rate the overall appearance and maintenance.	<input type="radio"/>	<input type="radio"/>	<input type="radio"/>	<input type="radio"/>

Comments: \_\_\_\_\_

### 1.3 Trees

This pertains to the over health and appearance of the trees located on this park site.

	Poor	Below Average	Average	Excellent
Please rate the overall appearance and maintenance.	<input type="radio"/>	<input type="radio"/>	<input type="radio"/>	<input type="radio"/>

Comments: \_\_\_\_\_

### 1.4 Swale

This area pertains to the drain that runs along the 950 linear feet of park.

	Poor	Below Average	Average	Excellent
Please rate the overall appearance and maintenance.	<input type="radio"/>	<input type="radio"/>	<input type="radio"/>	<input type="radio"/>

Comments: \_\_\_\_\_

\_\_\_\_\_

## 2.0 **STRUCTURAL DETAIL**

This detail is based on the structures on this site that consist of the Playground, Gazebos and Shade Structure.

### 2.1 **Gazebos**

There are 2-Gazebos at this location; each with 3-Picnic Tables and Trash Can.

	Poor	Below Average	Average	Excellent
Please rate the overall appearance and maintenance.	<input type="radio"/>	<input type="radio"/>	<input type="radio"/>	<input type="radio"/>

Comments: \_\_\_\_\_

\_\_\_\_\_

### 2.2 **Shade Structure**

The shade structure is in the center of the park with 3-Picnic Tables.

	Poor	Below Average	Average	Excellent
Please rate the overall appearance and maintenance.	<input type="radio"/>	<input type="radio"/>	<input type="radio"/>	<input type="radio"/>

Comments: \_\_\_\_\_

\_\_\_\_\_

### 2.3 **Playground**

The Playground is labeled for the age group of 5 -12 years old.

	Poor	Below Average	Average	Excellent
Please rate the overall appearance and maintenance.	<input type="radio"/>	<input type="radio"/>	<input type="radio"/>	<input type="radio"/>

Comments: \_\_\_\_\_

\_\_\_\_\_

### 2.4 **Dog Park**

This area pertains to the 12,177sqft. of DG that is split into two separate sections: Large Dogs and Small Dogs.

	Poor	Below Average	Average	Excellent
Please rate the overall appearance and maintenance.	<input type="radio"/>	<input type="radio"/>	<input type="radio"/>	<input type="radio"/>

Comments: \_\_\_\_\_

\_\_\_\_\_

## 2.5 Fencing

Most of this park is enclosed by chain link fencing. The Dog Park sectionals are also enclosed by black vinyl coated fencing.

	Poor	Below Average	Average	Excellent
Please rate the overall appearance and maintenance.	<input type="radio"/>	<input type="radio"/>	<input type="radio"/>	<input type="radio"/>

Comments: \_\_\_\_\_  
\_\_\_\_\_

## 3.0 PARK ASSETS

This category consists of park assets that require maintenance or servicing.

### 3.1 Basketball Court

This park contains 2-half courts with 2-hoops on a concrete surface.

	Poor	Below Average	Average	Excellent
Please rate the overall appearance and maintenance.	<input type="radio"/>	<input type="radio"/>	<input type="radio"/>	<input type="radio"/>

Comments: \_\_\_\_\_  
\_\_\_\_\_

### 3.2 Picnic Tables and Benches

The Picnic Tables are in Gazebos, and Shade Structure

The Benches are located around the Playground, East Walkway, Large Dog Park, Small Dog Park

	Poor	Below Average	Average	Excellent
Please rate the overall appearance and maintenance.	<input type="radio"/>	<input type="radio"/>	<input type="radio"/>	<input type="radio"/>

Comments: \_\_\_\_\_  
\_\_\_\_\_

### 3.3 Trash Cans

The Trash Cans are in the Gazebos, Shade Structure, and Large Dog Park

	Poor	Below Average	Average	Excellent
Please rate the overall appearance and maintenance.	<input type="radio"/>	<input type="radio"/>	<input type="radio"/>	<input type="radio"/>

Comments: \_\_\_\_\_  
\_\_\_\_\_

3.4 Dog Bag Dispenser

The Dispensers are at the Autumn Oak entrance, and Small Dog Park.

	Poor	Below Average	Average	Excellent
Please rate the overall appearance and maintenance.	<input type="radio"/>	<input type="radio"/>	<input type="radio"/>	<input type="radio"/>

Comments: \_\_\_\_\_

\_\_\_\_\_

Malaga Park  
32308 Mission Trail  
Wildomar, CA. 92595

*Shila No Lamb*

## 1.0 LANDSCAPE DETAIL

The landscape detail consists of areas that are covered by groundcover, trees, shrubs, and bark. This detail also includes the DG walkway. This location is maintained by the parks landscape contractor.

### 1.1 Groundcover and Tree Maintenance

This pertains to the Plants and Trees located throughout the park site.

	Poor	Below Average	Average	Excellent
Please rate the overall appearance and maintenance.	<input type="radio"/>	<input type="radio"/>	<input checked="" type="radio"/>	<input type="radio"/>

Comments: Signs of Gopher

### 1.2 Shrub Gardens

The shrubs area is located along south perimeter of park site.

	Poor	Below Average	Average	Excellent
Please rate the overall appearance and maintenance.	<input type="radio"/>	<input type="radio"/>	<input checked="" type="radio"/>	<input type="radio"/>

Comments: \_\_\_\_\_

### 1.3 DG Walkway

The pathway crosses through the center of the park starting on Wildomar Road leading up to Mission Trail.

	Poor	Below Average	Average	Excellent
Please rate the overall appearance and maintenance.	<input type="radio"/>	<input type="radio"/>	<input checked="" type="radio"/>	<input type="radio"/>

Comments: Some ruts from the heavy rains

## 2.0 STRUCTURAL DETAIL

This section pertains to the Shade Structures and Concrete Sign on this park site.

### 2.1 Shade Structures

There are two standalone wooden pergolas.



	Poor	Below Average	Average	Excellent
Please rate the overall appearance and maintenance.	<input type="radio"/>	<input type="radio"/>	<input type="radio"/>	<input checked="" type="radio"/>

Comments: \_\_\_\_\_  
\_\_\_\_\_

## 2.2 Signage

This pertains to the curved concrete sign on the corner of Wildomar Road and Malaga.

	Poor	Below Average	Average	Excellent
Please rate the overall appearance and maintenance.	<input type="radio"/>	<input type="radio"/>	<input type="radio"/>	<input checked="" type="radio"/>

Comments: \_\_\_\_\_  
\_\_\_\_\_

## 2.3 Fencing

This is pertaining to the wooden post and rope fencing along the Malaga Street.

	Poor	Below Average	Average	Excellent
Please rate the overall appearance and maintenance.	<input type="radio"/>	<input type="radio"/>	<input type="radio"/>	<input checked="" type="radio"/>

Comments: \_\_\_\_\_  
\_\_\_\_\_

# 3.0 PARK ASSETS

This category consists of park benches, trash containers and other features. These items are serviced by the janitorial contractor.

## 3.1 Benches and Trash Cans

The benches and trash containers are located under each wooden pergola.

	Poor	Below Average	Average	Excellent
Please rate the overall appearance and maintenance.	<input type="radio"/>	<input type="radio"/>	<input type="radio"/>	<input checked="" type="radio"/>

Comments: \_\_\_\_\_  
\_\_\_\_\_

## 3.2 Little Free Library

The little free library is located next to the southern shade structure.

	Poor	Below Average	Average	Excellent
Please rate the overall appearance and maintenance.	<input type="radio"/>	<input type="radio"/>	<input type="radio"/>	<input checked="" type="radio"/>

Comments: \_\_\_\_\_  
\_\_\_\_\_

## **Annual Financial Summary**

Total Measure Z revenues for FY 2021-22 were \$385,698.00, an increase of \$24,130 from last year's \$361,568. The expenditures were \$519,213, which is an increase of \$121,163 from \$398,050. The reason for the increase in expenditures was primarily due to heightened janitorial and security service costs as well as upgrades to the park camera system..

The fund balance on June 30, 2022 was \$93,156, a decrease of \$133,515 from last year's \$226,671. The remaining fund balance will be utilized for the maintenance and repair of park facilities

The following Audited Financial Statements were prepared by the City's external auditors Roger, Anderson, Malody & Scott, LLP.

**WILDOMAR MEASURE Z PARK FUND  
CITY OF WILDOMAR, CALIFORNIA  
  
FUND FINANCIAL STATEMENTS  
  
FOR THE YEAR ENDED JUNE, 30 2022**

**Prepared By:**

**The City of Wildomar  
Finance Department**

*City of Wildomar*  
*Wildomar Measure Z Park Fund*  
*Fund Financial Statements*

**For the year ended June 30, 2022**

---

**Table of Contents**

	<b>Page</b>
<b>Independent Auditor' Report</b>	1
<b>Fund Financial Statements:</b>	
Fund Financial Statements	
Balance Sheet - Governmental Fund	4
Statement of Revenues, Expenditures and Changes in Fund Balances - Governmental Fund	5
Notes to Financial Statements	6
<b>Required Supplementary Information:</b>	
Notes to Required Supplementary Information	10
Budgetary Comparison Schedule	11
<b>Report on Internal Control over Financial Reporting and on Compliance and other Matters Based on an Audit of Financial Statements Performed in Accordance with Government Auditing Standards</b>	12



ROGERS, ANDERSON, MALODY & SCOTT, LLP  
CERTIFIED PUBLIC ACCOUNTANTS, SINCE 1948

735 E. Carnegie Dr. Suite 100  
San Bernardino, CA 92408  
909 889 0871 T  
909 889 5361 F  
ramscca.net

#### PARTNERS

Terry P. Shea, CPA  
Scott W. Manno, CPA, CGMA  
Leena Shanbhag, CPA, MST, CGMA  
Bradferd A. Welebir, CPA, MBA, CGMA  
Jenny W. Liu, CPA, MST  
Gardenya Duran, CPA, CGMA  
Brianna Schultz, CPA, CGMA  
Brenda L. Odle, CPA, MST (Partner Emeritus)

#### MANAGERS / STAFF

Seong-Hyea Lee, CPA, MBA  
Evelyn Morentin-Barcena, CPA  
Veronica Hernandez, CPA  
Laura Arvizu, CPA  
John Maldonado, CPA, MSA  
Julia Rodriguez Fuentes, CPA, MSA  
Demi Hite, CPA  
Jeffrey McKennan, CPA

#### MEMBERS

American Institute of  
Certified Public Accountants

*PCPS The AICPA Alliance  
for CPA Firms*

*Governmental Audit  
Quality Center*

California Society of  
Certified Public Accountants



Proud Member of  
**AlliottGlobalAlliance™**

## *Independent Auditors' Report*

To the Honorable Mayor and Members  
of the City Council  
City of Wildomar, California

### **Report on the Audit of the Financial Statements**

#### ***Opinion***

We have audited the financial statements of the Measure Z Park Fund (the Fund), special revenue fund of the City of Wildomar, California, as of and for the year ended June 30, 2022, and the related notes to the financial statements, as listed in the table of contents.

In our opinion, the accompanying financial statements referred to above present fairly, in all material respects, the respective financial position of the Fund as of June 30, 2022, and the changes in financial position thereof for the year then ended in accordance with accounting principles generally accepted in the United States of America.

#### ***Basis for Opinion***

We conducted our audit in accordance with auditing standards generally accepted in the United States of America (GAAS) and the standards applicable to financial audits contained in *Government Auditing Standards*, issued by the Comptroller General of the United States. Our responsibilities under those standards are further described in the Auditor's Responsibilities for the Audit of the Financial Statements section of our report. We are required to be independent of the Fund and to meet our other ethical responsibilities, in accordance with the relevant ethical requirements relating to our audit. We believe that the audit evidence we have obtained is sufficient and appropriate to provide a basis for our audit opinion.

#### ***Responsibilities of Management for the Financial Statements***

The Fund's management is responsible for the preparation and fair presentation of the financial statements in accordance with accounting principles generally accepted in the United States of America; and for the design, implementation, and maintenance of internal control relevant to the preparation and fair presentation of financial statements that are free from material misstatement, whether due to fraud or error.

In preparing the financial statements, management is required to evaluate whether there are conditions or events, considered in the aggregate, that raise substantial doubt about the Fund's ability to continue as a going concern for twelve months beyond the financial statement date, including any currently known information that may raise substantial doubt shortly thereafter.

### ***Auditor's Responsibilities for the Audit of the Financial Statements***

Our objectives are to obtain reasonable assurance about whether the financial statements as a whole are free from material misstatement, whether due to fraud or error, and to issue an auditor's report that includes our opinion. Reasonable assurance is a high level of assurance but is not absolute assurance and therefore is not a guarantee that an audit conducted in accordance with GAAS will always detect a material misstatement when it exists. The risk of not detecting a material misstatement resulting from fraud is higher than for one resulting from error, as fraud may involve collusion, forgery, intentional omissions, misrepresentations, or the override of internal control. Misstatements are considered material if there is a substantial likelihood that, individually or in the aggregate, they would influence the judgment made by a reasonable user based on the financial statements.

In performing an audit in accordance with GAAS, we:

- Exercise professional judgment and maintain professional skepticism throughout the audit.
- Identify and assess the risks of material misstatement of the financial statements, whether due to fraud or error, and design and perform audit procedures responsive to those risks. Such procedures include examining, on a test basis, evidence regarding the amounts and disclosures in the financial statements.
- Obtain an understanding of internal control relevant to the audit in order to design audit procedures that are appropriate in the circumstances, but not for the purpose of expressing an opinion on the effectiveness of the Fund's internal control. Accordingly, no such opinion is expressed.
- Evaluate the appropriateness of accounting policies used and the reasonableness of significant accounting estimates made by management, as well as evaluate the overall presentation of the financial statements.
- Conclude whether, in our judgment, there are conditions or events, considered in the aggregate, that raise substantial doubt about the Fund's ability to continue as a going concern for a reasonable period of time.

We are required to communicate with those charged with governance regarding, among other matters, the planned scope and timing of the audit, significant audit findings, and certain internal control-related matters that we identified during the audit.

### ***Emphasis of Matter***

As discussed in Note 1 to the financial statements, the financial statements present only the Measure Z Park Special Revenue Fund, do not purport to, and do not present the financial position of the City of Wildomar, California, as of June 30, 2022, or the changes in its financial position for the year then ended in accordance with accounting principles generally accepted in the United States of America. Our opinion is not modified with respect to this matter.



### ***Required Supplementary Information***

Accounting principles generally accepted in the United States of America require that the required supplementary information, as listed in the table of contents, be presented to supplement the fund financial statements. Such information is the responsibility of management and, although not a part of the fund financial statements, is required by the Governmental Accounting Standards Board who considers it to be an essential part of financial reporting for placing the fund financial statements in an appropriate operational, economic, or historical context. We have applied certain limited procedures to the required supplementary information in accordance with auditing standards generally accepted in the United States of America, which consisted of inquiries of management about the methods of preparing the information and comparing the information for consistency with management's responses to our inquiries, the fund financial statements, and other knowledge we obtained during our audit of the fund financial statements. We do not express an opinion or provide any assurance on the information because the limited procedures do not provide us with sufficient evidence to express an opinion or provide any assurance.

Management has omitted the management's discussion and analysis that accounting principles generally accepted in the United States of America require to be presented to supplement the fund financial statements. Such missing information, although not a part of the fund financial statements, is required by the Governmental Accounting Standards Board, who considers it to be an essential part of financial reporting for placing the fund financial statements in an appropriate operational, economic, or historical context. Our opinion on the fund financial statements is not affected by this missing information.

### ***Other Reporting Required by Government Auditing Standards***

In accordance with *Government Auditing Standards*, we have also issued our report dated August 25, 2023 on our consideration of the Fund's internal control over financial reporting and on our tests of its compliance with certain provisions of laws, regulations, contracts, and grant agreements and other matters. The purpose of that report is solely to describe the scope of our testing of internal control over financial reporting and compliance and the results of that testing, and not to provide an opinion on the effectiveness of internal control over financial reporting or on compliance. That report is an integral part of an audit performed in accordance with *Government Auditing Standards* in considering the Fund's internal control over financial reporting and compliance.

*Rogers, Anderson, Malody & Scott, LLP.*

San Bernardino, California  
August 25, 2023

## **FUND FINANCIAL STATEMENTS**

*City of Wildomar*  
*Wildomar Measure Z Park Fund*  
*Fund Financial Statements*

**Balance Sheet**  
**Governmental Fund**  
**June 30, 2022**

---

**ASSETS**

Cash and investments	\$	170,300
Due from other governments		<u>25,108</u>
Total assets	\$	<u><u>195,408</u></u>

**LIABILITIES**

Accounts payable	\$	95,028
Accrued liabilities		<u>7,224</u>
Total liabilities		<u>102,252</u>

**FUND BALANCE**

Restricted for:		
Culture and recreation		<u>93,156</u>
Total fund balance		<u>93,156</u>
Total liabilities and fund balance	\$	<u><u>195,408</u></u>

*The accompanying notes are an integral part of this statement.*

*City of Wildomar*  
*Wildomar Measure Z Park Fund*  
*Fund Financial Statements*

**Statement of Revenues, Expenditures and Changes in Fund Balance**  
**Governmental Fund**  
**For the year ended June 30, 2022**

---

**REVENUES**

Intergovernmental	\$	366,380
Charges for services		18,640
Use of money and property		178
Miscellaneous revenues		500
		<hr/>
Total revenues		385,698
		<hr/>

**EXPENDITURES**

Current:		
General government		29,657
Culture and recreation		481,979
Debt service:		
Principal retirement		3,985
Interest		3,096
Capital outlay		496
		<hr/>
Total expenditures		519,213
		<hr/>
Excess (deficiency) of revenues over expenditures		(133,515)
Fund balance, beginning of year		226,671
		<hr/>
Fund balance, end of year	\$	93,156
		<hr/>

*The accompanying notes are an integral part of this statement.*

*City of Wildomar*  
*Wildomar Measure Z Park Fund*  
*Fund Financial Statements*

**Notes to Financial Statements**  
**For the year ended June 30, 2022**

---

**1) SUMMARY OF SIGNIFICANT ACCOUNTING POLICIES**

**A. Description of the Reporting Entity**

The Wildomar Measure Z Park Fund was established on November 6, 2012, pursuant to voter-approved annual parcel assessment to assist in the funding of park operations and related activities. On February 13, 2013, the City Council approved Resolution 2013-5 establishing the Measure Z Oversight and Advisory Committee and appointing 5 residents as committee members.

The Measure Z Park Fund is included as a special revenue fund of the City of Wildomar (the City) and, accordingly, the accompanying fund financial statements are included as a special revenue fund of the fund financial statements prepared by the City. The accompanying financial statements are intended to reflect the financial position of operations for the Measure Z Park Fund only and do not purport to, and do not, present the financial position of the City of Wildomar, California. Separate financial statements are prepared for the City of Wildomar, and may be obtained from the City.

**B. Measurement Focus, Basis of Accounting and Financial Statements Presentation**

Governmental fund financial statements are reported using the *current financial resources* measurement focus and the modified accrual basis of accounting. Revenues are recognized as soon as they are both measurable and available. Revenues are considered to be available when they are collectible within the current period or soon enough thereafter to pay liabilities of the current period. For this purpose, the government considers revenues to be available if they are collected within 60 days of the end of the current fiscal year. Expenditures generally are recorded when a liability is incurred, as under accrual accounting. However, debt service expenditures, as well as expenditures related to compensated absences and claims and judgments, are recorded only when payment is due.

When both restricted and unrestricted resources are available for use, it is the Fund's policy to use restricted resources first, and then unrestricted resources as they are needed.

**C. Assets, Deferred Outflows/Inflows of Resources, Liabilities, and Net Position or Equity**

*Cash and Investments*

The Fund currently pools its cash and investments with the City of Wildomar and follows the City's investment policies. The City's cash and cash equivalents are considered to be cash on hand, demand deposits, and short-term investments with original maturities of three months or less from the date of acquisition. For financial statement presentation purposes, cash and investments are shown as both restricted and unrestricted cash and investments in the governmental funds.

*City of Wildomar*  
*Wildomar Measure Z Park Fund*  
*Fund Financial Statements*

**Notes to Financial Statements**  
**For the year ended June 30, 2022**

---

**1) SUMMARY OF SIGNIFICANT ACCOUNTING POLICIES (continued)**

**C. Assets, Deferred Outflows/Inflows of Resources, Liabilities, and Net Position or Equity (continued)**

Investments are reported at fair value. The City's policy is to hold investments until maturity or until market values equal or exceed cost. The State Treasurer's Investment Pool operates in accordance with appropriate state laws and regulations. The reported value of the pool is the same as the fair value of the pool shares.

*Deferred Outflows/Inflows of Resources*

In addition to assets, the balance sheet will sometimes report a separate section for deferred outflows of resources. This separate financial statement element, *deferred outflows of resources*, represents a consumption of fund balance that applies to a future period(s) and so will not be recognized as an outflow of resources (expense/expenditure) until then. Currently, the Fund does not report any deferred outflows.

In addition to liabilities, the balance sheet will sometimes report a separate section for deferred inflows of resources. This separate financial statement element, *deferred inflows of resources*, represents an acquisition of fund balance that applies to a future period(s) and so will not be recognized as an inflow of resources (revenue) until that time. Currently, the Fund does not report any deferred inflows.

*Fund Balance*

In the fund financial statements, government funds report the following fund balance classification:

***Nonspendable*** include amounts that cannot be spent because they are either (a) not in spendable form or (b) legally or contractually required to be maintained intact.

***Restricted*** include amounts that are constrained on the use of resources by either, (a) external creditors, grantors, contributions, or laws of regulations of other governments or (b) by law through constitutional provisions or enabling legislation.

***Committed*** include amounts that can only be used for specific purposes pursuant to constraints imposed by formal action of the government's highest authority, the City Council. The formal action that is required to be taken to establish, modify, or rescind a fund balance commitment is a resolution.

***Assigned*** include amounts that are constrained by the government's intent to be used for specific purposes, but are neither restricted nor committed. The City Manager is authorized to assign amounts to a specific purpose, which was established by the governing body in Resolution No. 2011-20 approved on June 21, 2011.

*City of Wildomar*  
*Wildomar Measure Z Park Fund*  
*Fund Financial Statements*

**Notes to Financial Statements**  
**For the year ended June 30, 2022**

---

**1) SUMMARY OF SIGNIFICANT ACCOUNTING POLICIES (continued)**

**C. Assets, Deferred Outflows/Inflows of Resources, Liabilities, and Net Position or Equity (continued)**

***Unassigned include the residual amounts that have not been restricted, committed, or assigned to specific purposes.***

*Use of Estimates*

The preparation of financial statements in conformity with accounting principles generally accepted in the United States of America requires management to make estimates and assumptions that affect the reported amounts of assets, liabilities, and deferred outflows/inflows of resources, and disclosure of contingent assets and liabilities at the date of the financial statements and the reported amounts of revenues and expenditures/expenses during the reported period. Actual results could differ from those estimates.

*Functional Classifications*

Expenditures of the governmental funds are classified by function. Functional classifications are defined as follows:

- **General Government** includes legislative activities, City Clerk, City Attorney, City Manager as well as management or supportive services across more than one functional area
- **Culture and Recreation** which includes activities which provide recreation, cultural and educational services.

*Encumbrances*

Encumbrances are estimations of costs related to unperformed contracts for goods and services. These commitments are recorded for budgetary control purposes in the fund. Encumbrances represent the estimated amount of the expenditure ultimately to result if unperformed contracts in process at year-end are completed. They do not constitute expenditures or estimated liabilities.

*Budget Basis of Accounting*

Budgets for governmental funds are adopted on a basis consistent with generally accepted accounting principles (GAAP).

*Lease expenditure*

The Fund currently makes lease principal and interest payments. See the City's notes for details.



*City of Wildomar*  
*Wildomar Measure Z Park Fund*  
*Fund Financial Statements*

**Notes to Financial Statements**  
**For the year ended June 30, 2022**

---

**2) CASH AND INVESTMENTS**

The Measure Z Park Fund is pooled with the City of Wildomar's cash and investments in order to generate optimum interest earnings. The information required by accounting standards related to authorized investments, credit risk, etc. is available in the comprehensive annual financial report of the City. Currently, the Fund has \$170,300 in pooled cash and investments.

**3) FAIR VALUE MEASUREMENTS**

Accounting standards currently provide the framework for measuring fair value. The framework provides a fair value hierarchy that prioritizes the inputs to valuation techniques used to measure fair value with Level 1 given the highest priority and Level 3 the lowest priority. The three levels of the fair value hierarchy are as follows:

*Level 1* inputs are quoted prices (unadjusted) in active markets for identical assets or liabilities that the organization has the ability to access at the measurement date.

*Level 2* inputs are inputs other than quoted prices included within Level 1 that are observable for the asset or liability, either directly or indirectly. Level 2 inputs include the following:

- Quoted prices for similar assets or liabilities in active markets.
- Quoted prices for identical or similar assets or liabilities in markets that are not active.
- Inputs other than quoted prices that are observable for the asset or liability (for example, interest rates and yield curves observable at commonly quoted intervals, volatilities, prepayment speeds, loss severities, credit risks, and default rates).
- Inputs that are derived principally from or corroborated by observable market data by correlation or other means (market-corroborated inputs).

*Level 3* inputs are unobservable inputs for the asset or liability.

As explained in Note 2, the Measure Z Park Fund has its investments pooled with the City. The cash and investments reflected is a portion of the City's overall cash and investments. Refer to the City's financial statements for additional information relating to categorization of investment types.

**4) COMMITMENTS AND CONTINGENCIES**

As of June 30, 2022, in the opinion of the City's Administration, there are no outstanding matters which would have a significant effect on the financial condition of the Measure Z Park Fund.

## **REQUIRED SUPPLEMENTARY INFORMATION**

*City of Wildomar*  
*Wildomar Measure Z Park Fund*  
*Fund Financial Statements*

**Notes to Required Supplementary Information**  
**For the year ended June 30, 2022**

---

**Budgetary Comparison Information**

*General Budget Policies*

The City Council approves each year's budget prior to the beginning of the new fiscal year. Public hearings are conducted prior to its adoption by the Council. Supplemental appropriations, where required during the period, are also approved by the Council. In most cases, expenditures may not exceed appropriations at the function level. At fiscal year-end, all operating budget appropriations lapse. The following functions had expenditures which exceeded budgeted appropriations:

	<u>Final budget</u>	<u>Actual amount</u>	<u>Variance</u>
General government	\$ 29,400	\$ 29,657	\$ (257)
Debt service:			
Principal retirement	-	3,985	(3,985)
Interest	-	3,096	(3,096)

*Encumbrances*

Encumbrances are estimations of costs related to unperformed contracts for goods and services. These commitments are recorded for budgetary control purposes in the fund. Encumbrances represent the estimated amount of the expenditure ultimately to result if unperformed contracts in process at year-end are completed. They do not constitute expenditures or estimated liabilities.

*Budget Basis of Accounting*

Budgets for governmental funds are adopted on a basis consistent with generally accepted accounting principles (GAAP).

*City of Wildomar*  
*Wildomar Measure Z Park Fund*  
*Fund Financial Statements*

**Notes to Required Supplementary Information**  
**For the year ended June 30, 2022**

	Budgeted Amounts		Actual	Variance with
	Original	Final	Amounts	Final Budget
Budgetary fund balance, beginning of year	\$ 226,671	\$ 226,671	\$ 226,671	\$ -
<b>Resources (Inflows):</b>				
Intergovernmental	392,700	392,700	366,380	(26,320)
Charges for services	36,500	38,000	18,640	(19,360)
Investment earnings	200	200	178	(22)
Miscellaneous revenues	-	500	500	-
Amounts available for appropriations	656,071	658,071	612,369	(45,702)
<b>Charges to Appropriations (Outflows):</b>				
Current:				
General government	26,800	29,400	29,657	(257)
Culture and recreation	442,600	487,500	481,979	5,521
Debt service:				
Principal retirement	-	-	3,985	(3,985)
Interest	-	-	3,096	(3,096)
Capital outlay	-	7,500	496	7,004
Total charges to appropriations	469,400	524,400	519,213	5,187
<b>Budgetary fund balance, end of year</b>	<b>\$ 186,671</b>	<b>\$ 133,671</b>	<b>\$ 93,156</b>	<b>\$ (40,515)</b>



ROGERS, ANDERSON, MALODY & SCOTT, LLP  
CERTIFIED PUBLIC ACCOUNTANTS, SINCE 1948

735 E. Carnegie Dr. Suite 100  
San Bernardino, CA 92408  
909 889 0871 T  
909 889 5361 F  
ramscpa.net

## REPORT ON INTERNAL CONTROL OVER FINANCIAL REPORTING AND ON COMPLIANCE AND OTHER MATTERS BASED ON AN AUDIT OF FINANCIAL STATEMENTS PERFORMED IN ACCORDANCE WITH GOVERNMENT AUDITING STANDARDS

### *Independent Auditor's Report*

#### **PARTNERS**

Terry P. Shea, CPA  
Scott W. Manno, CPA, CGMA  
Leena Shanbhag, CPA, MST, CGMA  
Bradferd A. Welebir, CPA, MBA, CGMA  
Jenny W. Liu, CPA, MST  
Gardenya Duran, CPA, CGMA  
Brianna Schultz, CPA, CGMA  
Brenda L. Odle, CPA, MST (Partner Emeritus)

#### **MANAGERS / STAFF**

Seong-Hyea Lee, CPA, MBA  
Evelyn Morentin-Barcena, CPA  
Veronica Hernandez, CPA  
Laura Arvizu, CPA  
John Maldonado, CPA, MSA  
Julia Rodriguez Fuentes, CPA, MSA  
Demi Hite, CPA  
Jeffrey McKennan, CPA

#### **MEMBERS**

American Institute of  
Certified Public Accountants

*PCPS The AICPA Alliance  
for CPA Firms*

*Governmental Audit  
Quality Center*

California Society of  
Certified Public Accountants

To the Honorable Mayor and Members  
of the City Council  
City of Wildomar, California

We have audited, in accordance with auditing standards generally accepted in the United States of America and the standards applicable to financial audits contained in *Government Auditing Standards* issued by the Comptroller General of the United States, the financial statements of the Measure Z Park Fund (the Fund), a special revenue fund of the City of Wildomar, as of and for the year ended June 30, 2022, and the related notes to the financial statements, which collectively comprise the Fund's financial statements, and have issued our report thereon dated August 25, 2023.

### ***Internal Control over Financial Reporting***

In planning and performing our audit of the financial statements, we considered the Fund's internal control over financial reporting (internal control) as a basis for designing audit procedures that are appropriate in the circumstances for the purpose of expressing our opinions on the financial statements, but not for the purpose of expressing an opinion on the effectiveness of the Fund's internal control. Accordingly, we do not express an opinion on the effectiveness of the Fund's internal control.

A *deficiency in internal control* exists when the design or operation of a control does not allow management or employees in the normal course of performing their assigned functions, to prevent, or detect and correct misstatements on a timely basis. A *material weakness* is a deficiency, or a combination of deficiencies, in internal control, such that there is a reasonable possibility that a material misstatement of the entity's financial statements will not be prevented, or detected and corrected on a timely basis. A *significant deficiency* is a deficiency, or a combination of deficiencies, in internal control that is less severe than a material weakness, yet important enough to merit attention by those charged with governance.



Our consideration of internal control was for the limited purpose described in the first paragraph of this section and was not designed to identify all deficiencies in internal control that might be material weaknesses or significant deficiencies. Given these limitations, during our audit we did not identify any deficiencies in internal control that we consider to be material weaknesses. However, material weaknesses or significant deficiencies may exist that were not identified.

### ***Compliance and Other Matters***

As part of obtaining reasonable assurance about whether the Fund's financial statements are free from material misstatement, we performed tests of its compliance with certain provisions of laws, regulations, contracts, and grant agreements, noncompliance with which could have a direct and material effect on the financial statements. However, providing an opinion on compliance with those provisions was not an objective of our audit and, accordingly, we do not express such an opinion. The results of our tests disclosed no instances of noncompliance or other matters that are required to be reported under *Government Auditing Standards*.

### **Purpose of this Report**

The purpose of this report is solely to describe the scope of our testing of internal control and compliance and the results of that testing, and not to provide an opinion on the effectiveness of the Fund's internal control or on compliance. This report is an integral part of an audit performed in accordance with *Government Auditing Standards* in considering the Fund's internal control and compliance. Accordingly, this communication is not suitable for any other purpose.

*Rogers, Anderson, Malody & Scott, LLP.*

San Bernardino, California  
August 25, 2023

